

## Water Lane, EC3R

£3,100 Per calendar month

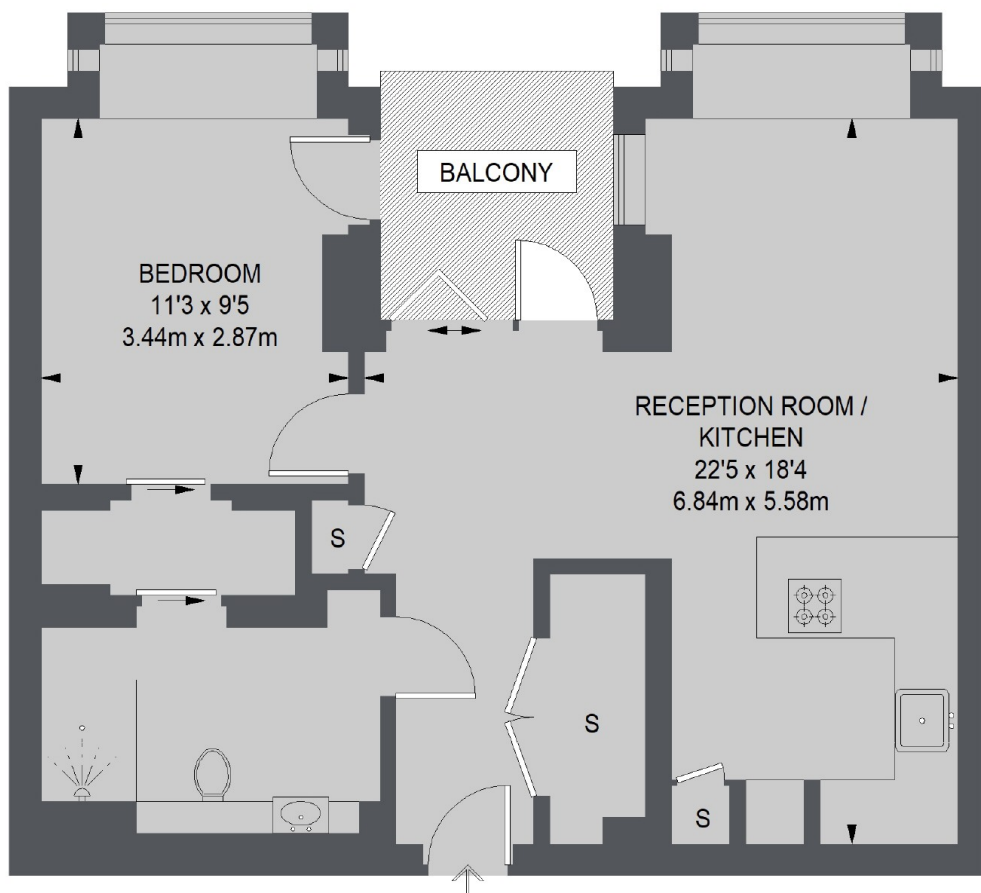
A luxury one double bedroom apartment in Sugar Quay with a large private balcony. This high specification property has lots of storage and on site facilities including a gym, swimming pool, treatment rooms, resident's lounge and cinema.

Sugar Quay is next to Tower of London and close to Monument and Tower Hill Underground Stations which are both just a few minutes walk from the property.

### Features

- One Double Bedroom
- Private Balcony
- Furnished
- Swimming Pool
- Gym
- Tower Hill

# Water Lane, London, EC3R



## THIRD FLOOR

TOTAL APPROX. FLOOR AREA  
610 SQ. FT. (56.71 SQ. M.)