



Assam Street, E1

£2,950 Per calendar month

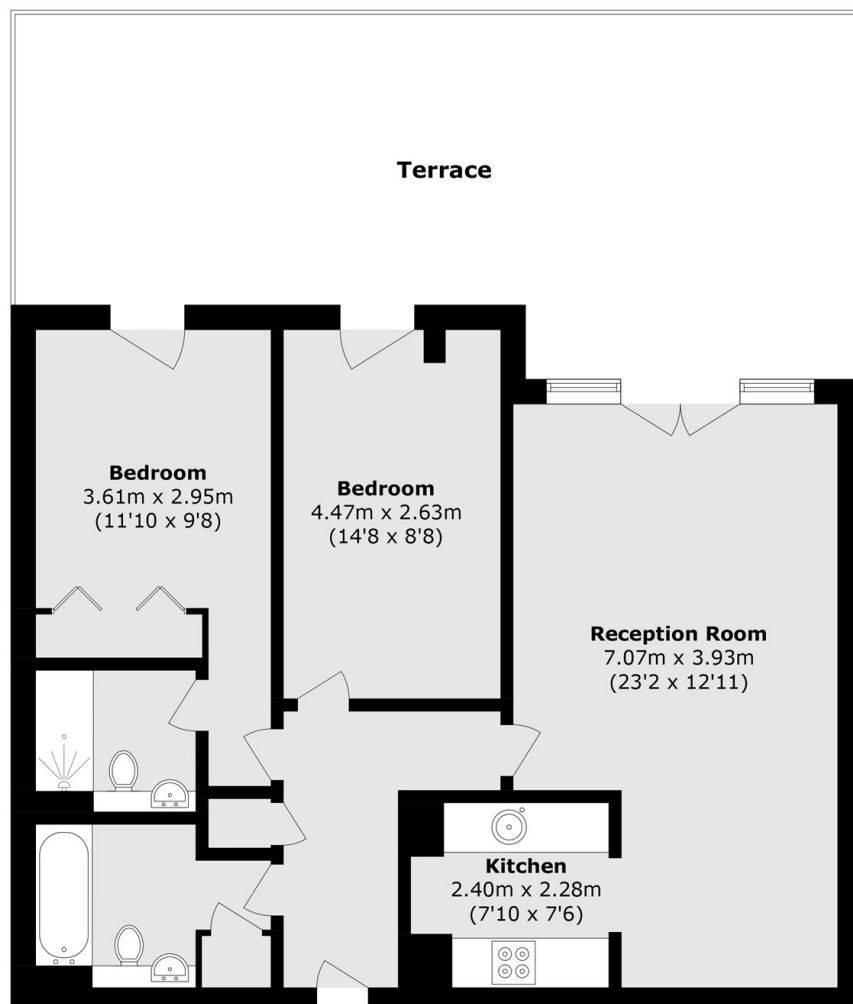
A two double bedroom property in the heart of The City. This property has a large private terrace with access from both the living room and one bedroom, the property also has two bathrooms and a 24 Hour Concierge.

Naylor Building is perfectly located for Aldgate East Station and has popular restaurants and bars in Shoreditch and Brick Lane a short walk away.

Features

- Two Double Bedrooms
- Two Bathrooms
- Large Private Terrace
- Concierge
- Gym Facilities
- Furnished

Assam Street, London, E1



Total area (approx.): 73.7 sq. m (793.3 sq. ft)
(Excluding Terrace)