



## Old Castle Street, E1

£2,500 Per calendar month

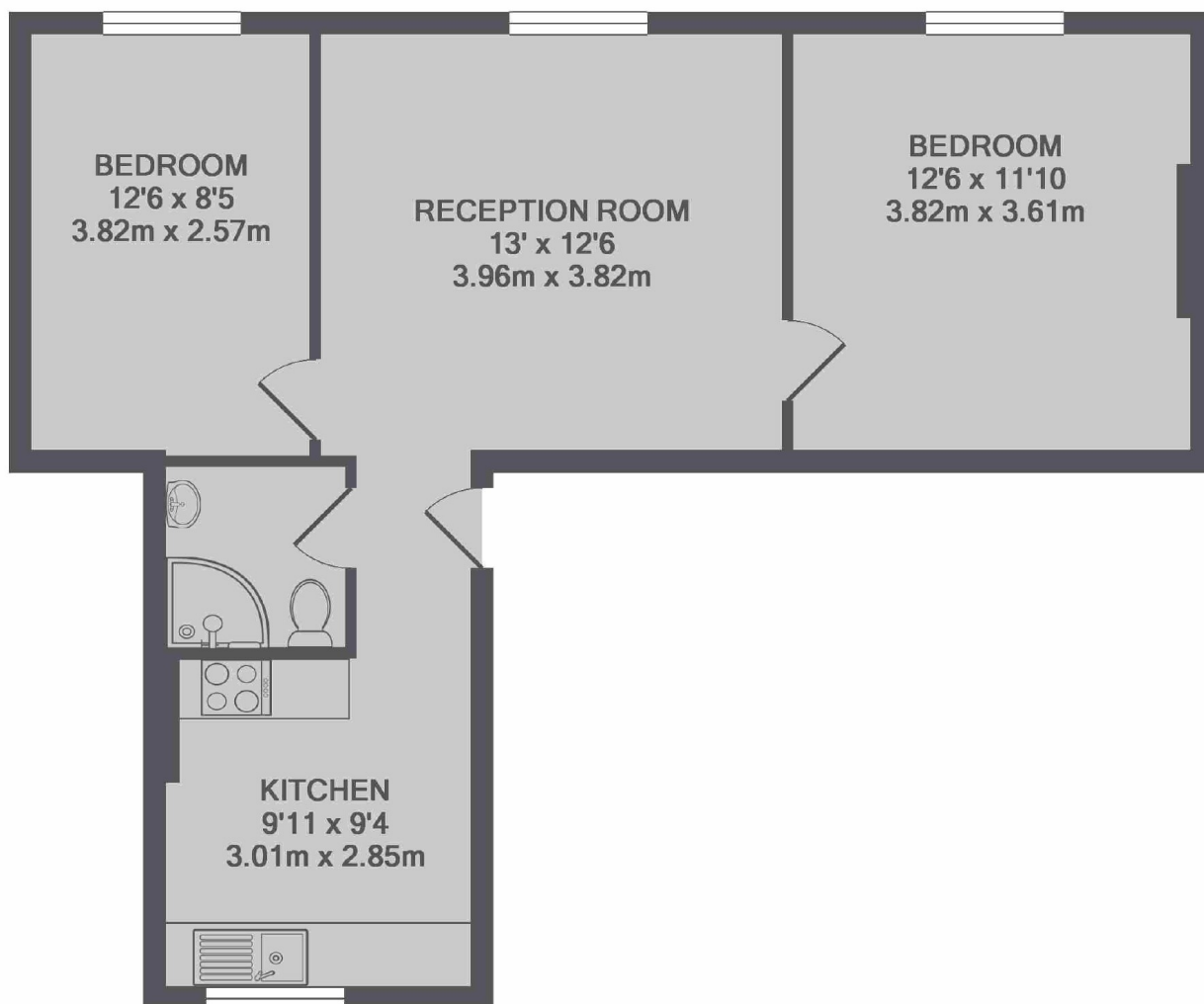
A two double bedroom apartment located in a smart and stylish development. The property has two double bedrooms, a spacious reception room, separate kitchen and a smart bathroom with shower. Ideal for a professional couple or sharers looking to be in the heart of the City.

Old Castle Street is a quiet location in between Liverpool Street and Aldgate with Spitalfields Market, Petticoat Market and the hustle and bustle of the City just moments away.

### Features

- Two Double Bedrooms
- Sash Windows
- Secure Entry
- Communal Gardens
- Furnished
- Spitalfields Market

# Old Castle Street, London, E1



TOTAL APPROX. FLOOR AREA 567 SQ.FT. (52.6 SQ.M.)