



## Times Square, E1

£2,500 Per calendar month

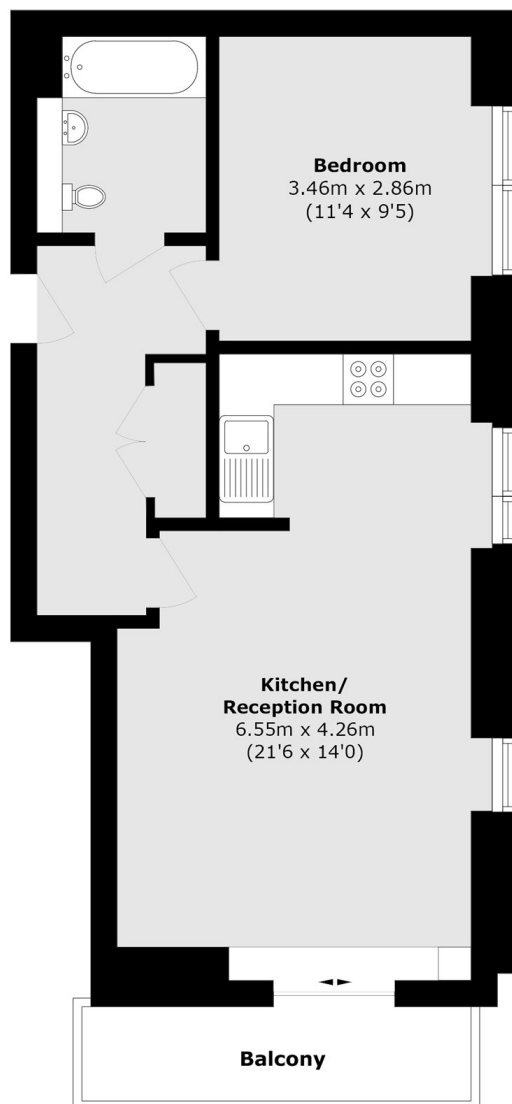
This stylish one bedroom apartment is based in the popular Time Square Development in the heart of the City. This property consists of a bright and spacious open plan reception room with private balcony, modern kitchen with integrated appliances and a large double bedroom.

Times Square has a 24 hour concierge service and is just over a quarter mile from Aldgate East Station (District/ Hammersmith & City Line) and less than a quarter mile from Tower Gateway (DLR Line) for easy access to the City and Docklands.

### Features

- One Double Bedroom
- Gated Development
- Concierge
- Private Balcony
- Water Feature Courtyard
- Aldgate Station

# Times Square, London, E1



Total area (approx.): 51.6 sq. m (555.4 sq. ft)

Balcony area (approx.): 4.72 sq. m (50.8 sq. ft)