



Middlesex Street, E1

£2,500 Per calendar month

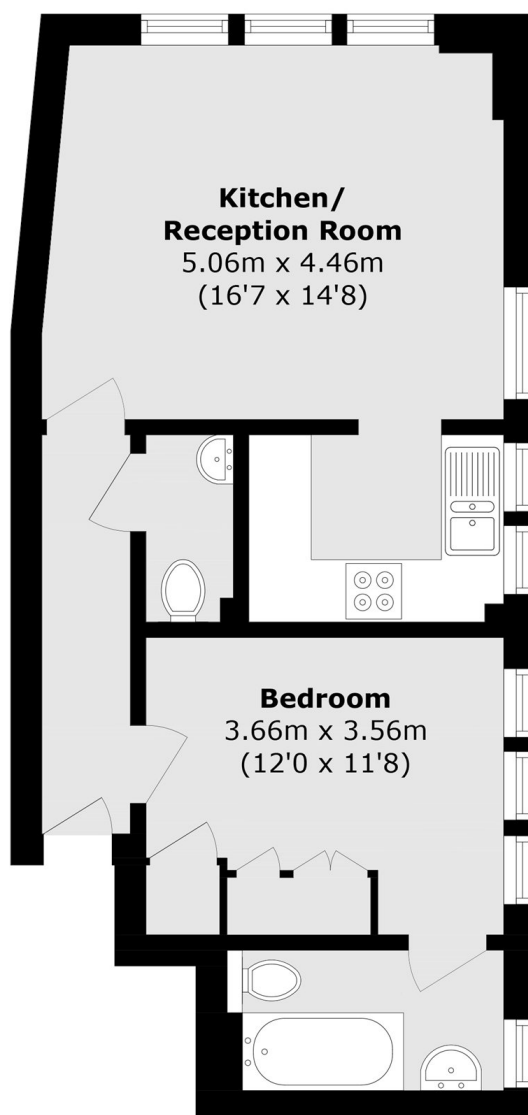
A one double bedroom property located in a stunning period conversion in the heart of Bishopsgate. The property has a semi open plan kitchen/reception room, high ceilings and lots of natural light. This property is ideal for single professional or couple looking to be in the heart of the City.

Astral House is 0.2 miles from Liverpool Street station with its mainline national rail and underground connections, 0.1 miles from Spitalfield Market and 0.4 miles from Brick Lane all with their many shops, restaurants and other amenities.

Features

- One Double Bedroom
- Open Plan Living
- Period Conversion
- Lots of Natural Light
- Additional WC
- Close to Liverpool Street

Middlesex Street, London, E1



Total area (approx.): 41.7 sq. m (448.8 sq. ft)