

Leyden Street, E1

£2,700 Per calendar month

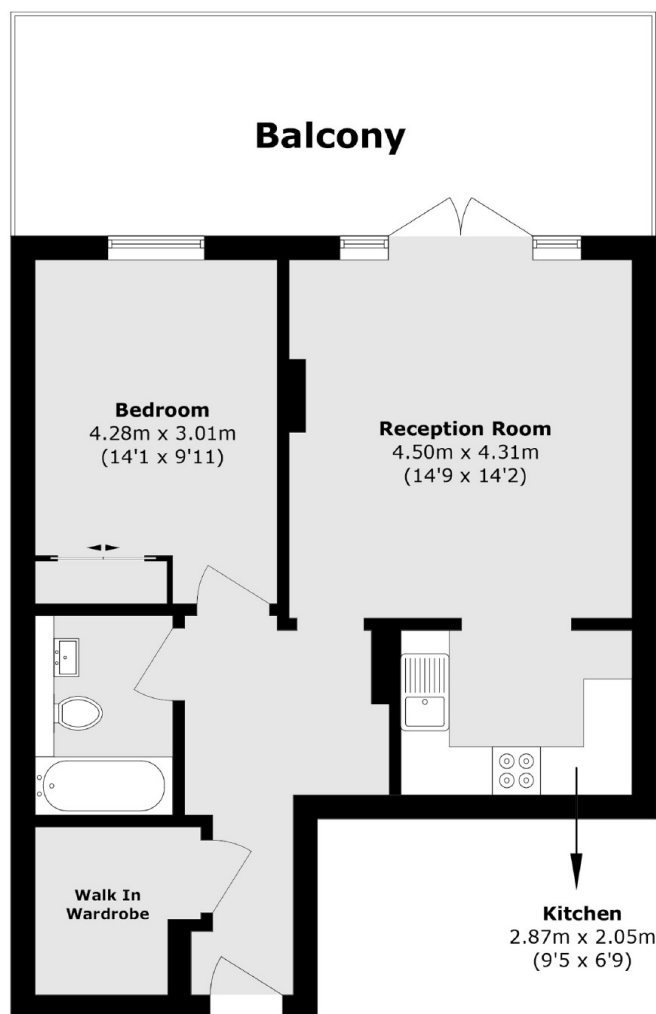
An extremely large one double bedroom apartment in St. Clements House. The apartment has a large living room, newly refurbished bathroom as well as a spacious outdoor terrace with amazing views of the city and a day time porter.

St Clements House is perfectly located by Liverpool Street Station, with easy access throughout London and the popular Spitalfields Market is close by.

Features

- One Double Bedroom
- Gated Development
- Concierge
- Private Terrace
- Aldgate
- City Views

Leyden Street, London, E1



Total area (approx.): 57.4 sq. m (617.9 sq. ft)

Balcony area (approx.): 21.5 sq. m (231.4 sq. ft)