

Pedley Street, E1

£3,000 Per calendar month

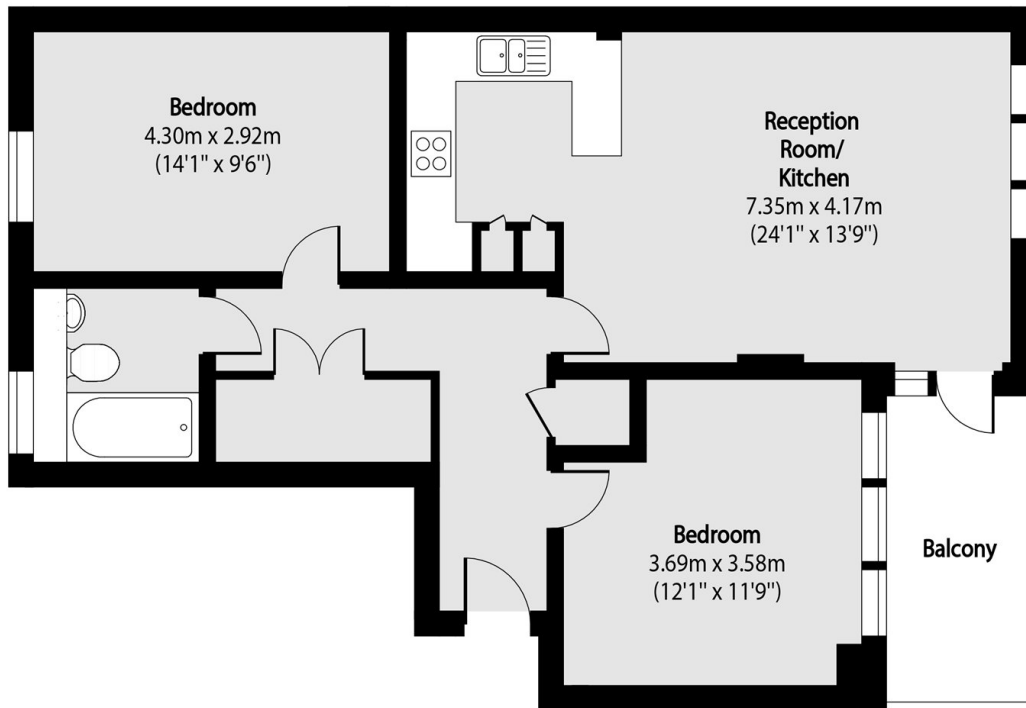
A two double bedroom apartment available to let on Pedley Street. This property has a large open plan living room, a modern kitchen and a lovely private terrace.

Pedley Street is in the perfect location just off Commercial Street with Spitalfields Market just moments away and easy access to Shoreditch High Street and Liverpool Street Station.

Features

- Two Double Bedrooms
- Private Terrace
- Modern Kitchen
- Close to Transport Links
- Spitalfields Market
- Shoreditch

Pedley Street, London, E1



Total area (approx): 71.56 sq m (770 sq. ft)

Balcony total area (approx): 6.29 sq m (68 sq. ft)