

Commercial Road, E1

£2,250 Per calendar month

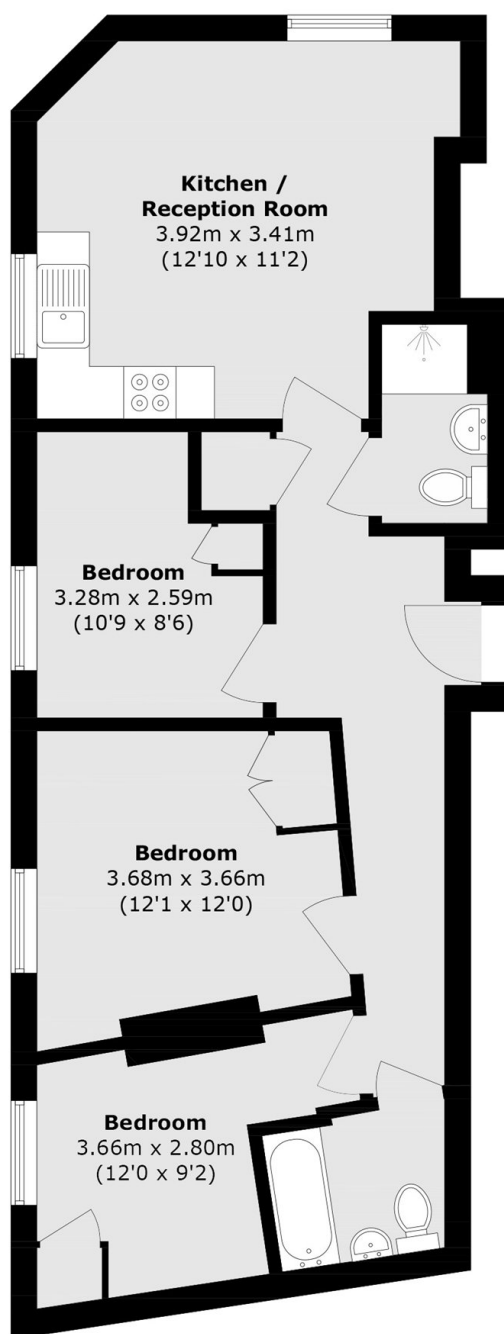
A well-presented, three bedroom apartment, in the historical East End Mission Building. The apartment has an open plan living room with a fully integrated kitchen and space to dine and three good size double bedrooms with in-built storage. The property also offers two bathrooms which are refurbished to a modern standard. The entire property has a generous amount of natural light made possible from the large feature windows and the development has an on-site porter service.

East End Mission is located within a sought after location providing a wide array of amenities including popular restaurants, bars, shopping opportunities and further entertainment venues. A variety of bus routes can be found on Commercial Road and the closest station is the well connected Limehouse DLR, providing easy access to all corners of the City.

Features

- Three Bedrooms
- Two Bathrooms
- Modern Interiors
- Open Plan
- Generous Natural Light
- On-site Porter

Commercial Road, London, E1



Total area (approx.): 67.2 sq. m (723.3 sq. ft)