



Morton Close, E1

£1,750 Per calendar month

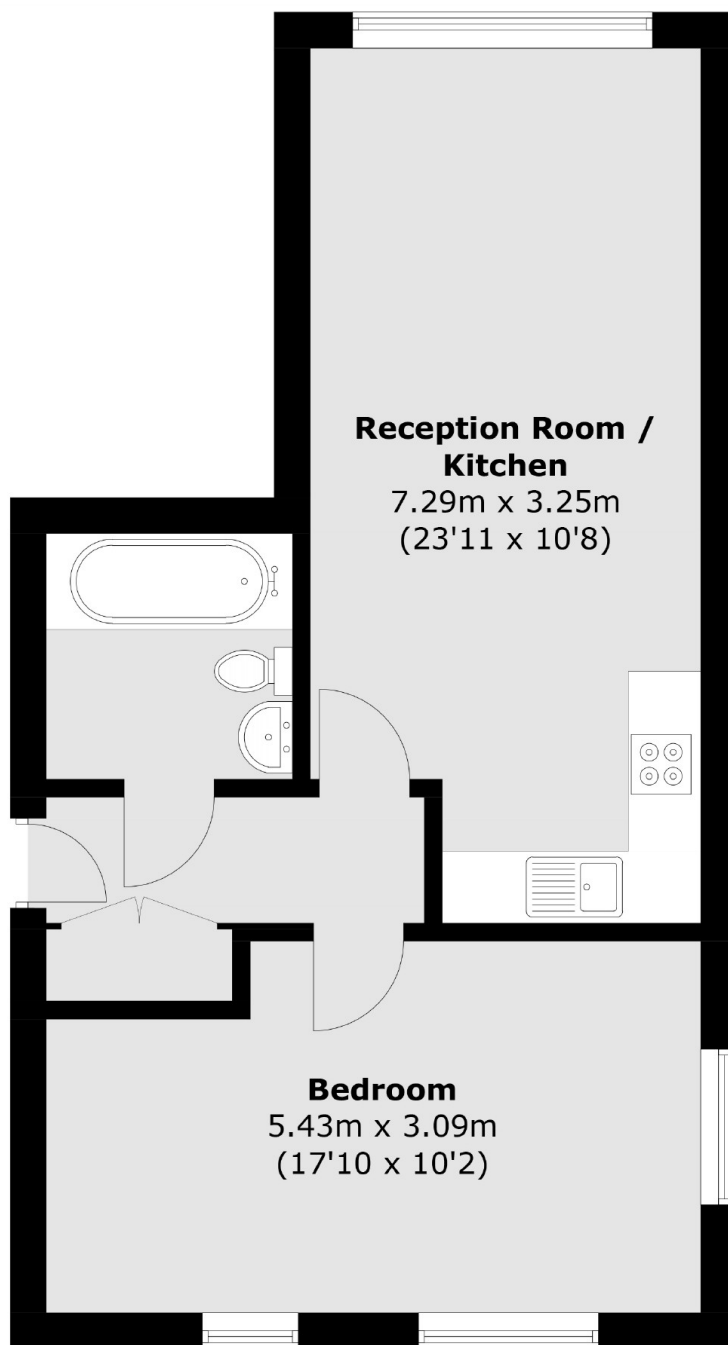
A large one one bedroom apartment in Morton Close. This property has an open plan reception, has been redecorated throughout with new fitted carpet in the bedroom and comes furnished.

Morton Close is perfectly situated in the middle of both Shadwell DLR and Whitechapel stations, giving you great access to both the City and Canary Wharf.

Features

- One Large Bedroom
- Gated Development
- Second Floor
- Recently Redecorated
- Open Plan
- Juliette Balcony

Morton Close, London, E1



Second Floor

Total area (approx.): 48.7 sq. m (524.2 sq. ft)

Dexters

City
5 Sandys Row
London
E1 7HW
Lettings
020 7392 9111

Energy Rating: C. We aim to make our particulars both accurate and reliable. However they are not guaranteed; nor do they form part of an offer or contract. If you require clarification on any points then please contact us, especially if you're traveling some distance to view. Please note that appliances and heating systems have not been tested and therefore no warranties can be given as to their good working order.

 **RICS** | Regulated
Estate Agent
and Letting Agent

[dexters.co.uk](https://www.dexters.co.uk)