



Whitechapel High Street, E1

£3,100 Per calendar month

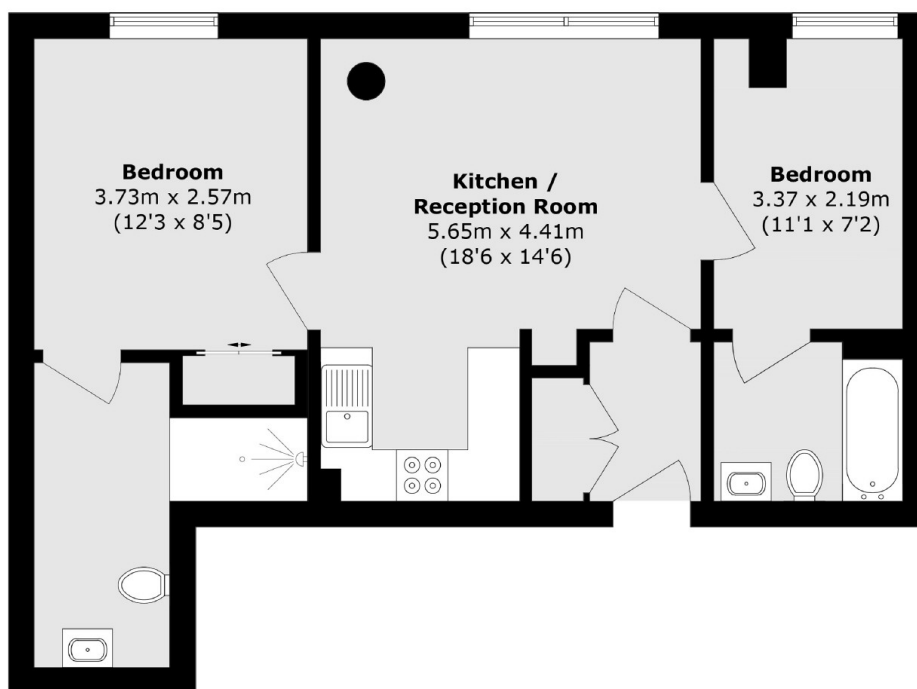
A modern two double bedroom, two bathroom property in the Crawford Building. This property has a open plan kitchen reception with floor to ceiling windows, wood flooring throughout and a concierge.

The Crawford Building is moments away from Aldgate Station and Spitalfields Market, as well as the famous Brick Lane.

Features

- Two Double Bedrooms
- Two Bathrooms
- Wood Flooring
- 24 Hour Concierge
- Furnished
- Aldgate

Whitechapel High Street, London, E1



Total area (approx.): 59.9 sq. m (644.8 sq. ft)

Dexters

City
5 Sandys Row
London
E17HW
Lettings
020 7392 9111

Energy Rating: . We aim to make our particulars both accurate and reliable. However they are not guaranteed; nor do they form part of an offer or contract. If you require clarification on any points then please contact us, especially if you're traveling some distance to view. Please note that appliances and heating systems have not been tested and therefore no warranties can be given as to their good working order.

 **RICS** | Regulated
Estate Agent
and Letting Agent

[dexters.co.uk](https://www.dexters.co.uk)