



## Lamb Street, E1

£3,200 Per calendar month

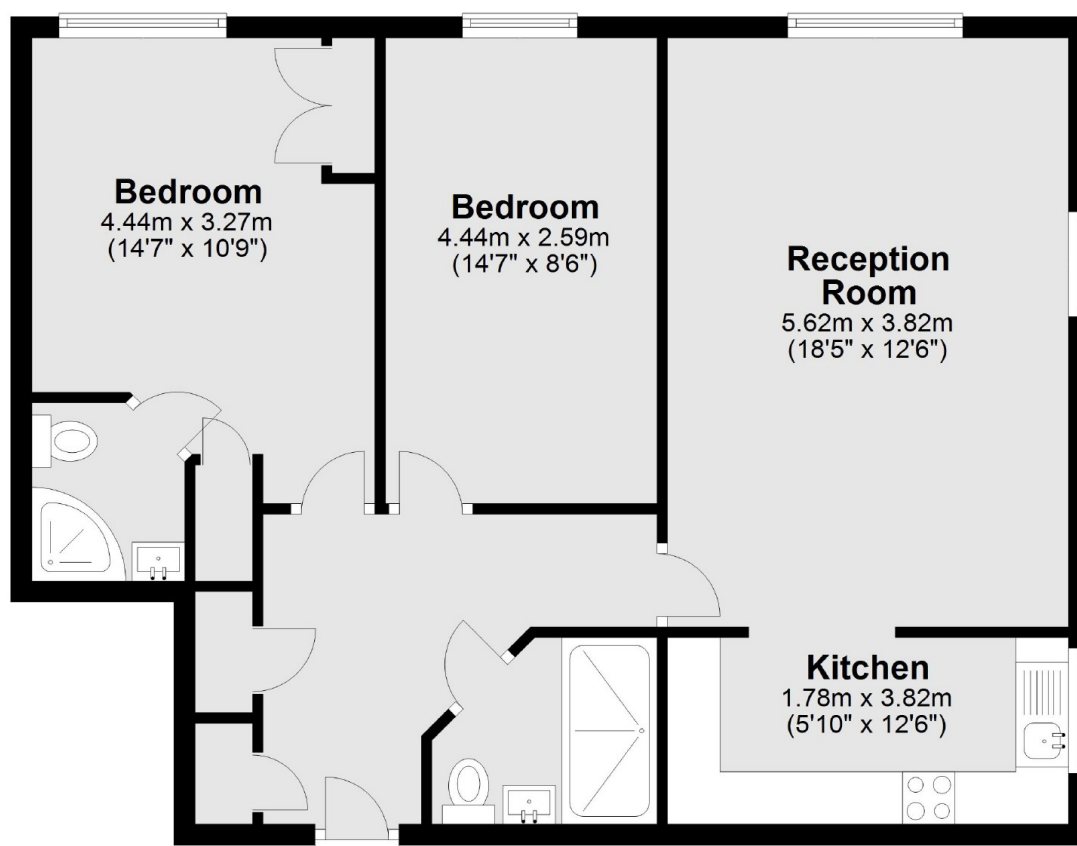
A luxurious two double bedroom property in the heart of Spitalfields. This property has two double bedrooms, built in storage, a separate modern kitchen and wooden floors throughout.

Folgate Street is a lovely cobbled road which is located adjacent to Spitalfields Market, close to Liverpool Street station and the many local shops, restaurants and bars.

### Features

- Two Double Bedrooms
- Two Bathrooms
- Concierge
- Wood Flooring
- Furnished
- Spitalfields Market

# Lamb Street, London, E1



Total area: approx. 70.5 sq. metres (758.4 sq. feet)