



Thrawl Street, E1

£3,500 Per calendar month

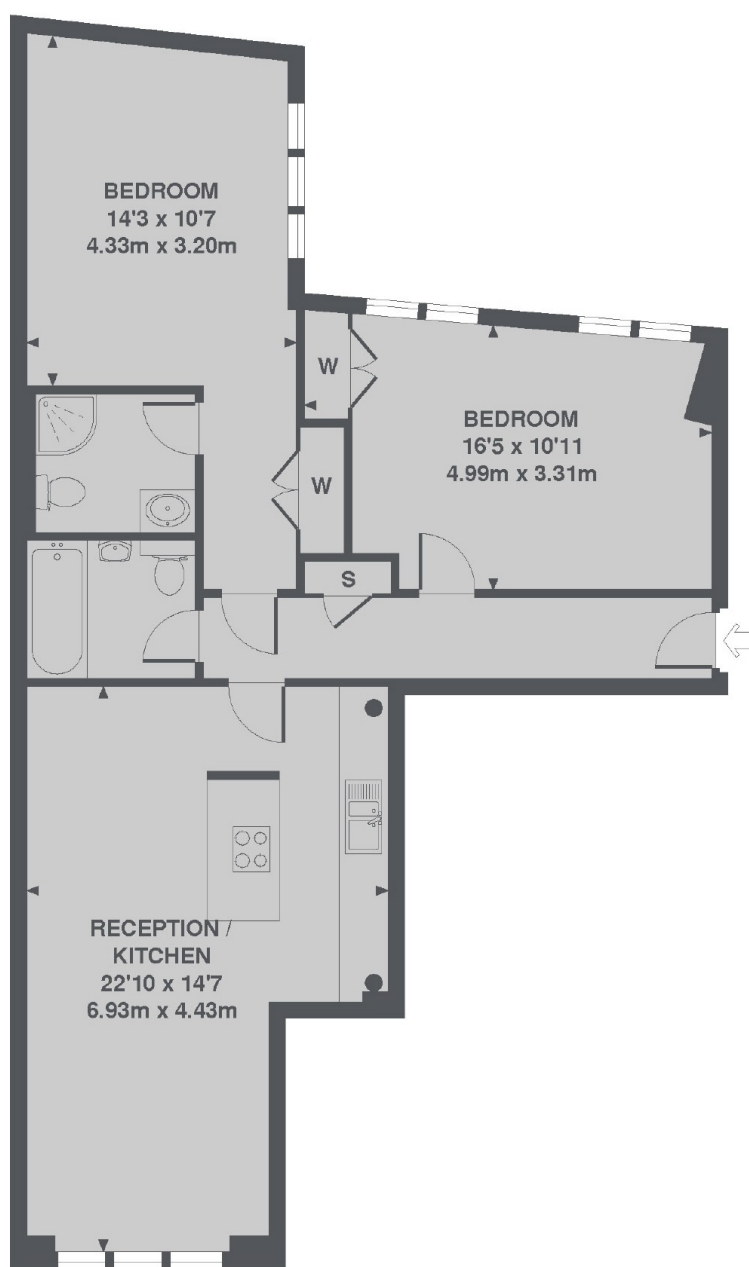
This spacious two double bedroom, two bathroom warehouse conversion apartment has an open plan kitchen/reception room which is perfect for entertaining and has exposed brickwork throughout, plus large warehouse windows.

Thrawl Street is located moments away from Spitalfields market, winner of the 2007 Best New Open Space, it also offers regular free events including film screenings, lunchtime concerts and cultural festivals.

Features

- Two Double Bedrooms
- Two Bathrooms
- Warehouse Conversion
- Exposed Brickwork
- Lift Access
- Secure Entry

Thrawl Street, London, E1



1ST FLOOR

TOTAL APPROX. FLOOR AREA 791 SQ. FT. (73.5 SQ. M.)

Dexters

City
5 Sandys Row
London
E17HW
Lettings
020 7392 9111

Energy Rating: D. We aim to make our particulars both accurate and reliable. However they are not guaranteed; nor do they form part of an offer or contract. If you require clarification on any points then please contact us, especially if you're traveling some distance to view. Please note that appliances and heating systems have not been tested and therefore no warranties can be given as to their good working order.

 **RICS** | Regulated
Estate Agent
and Letting Agent

[dexters.co.uk](https://www.dexters.co.uk)