



Sidney Square, E1

£4,300 Per calendar month

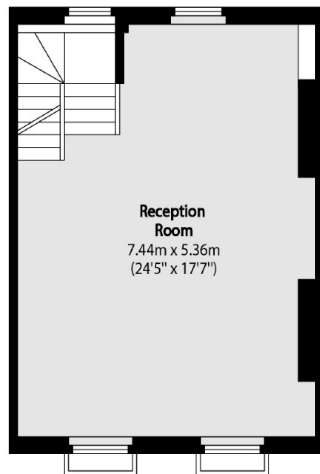
An impressive three bedroom, Grade II listed town house located in the heart of Whitechapel. Spread over four stories, this recently refurbished property combines contemporary living with charming period features.

The property is ideally located just off Commercial Road which boasts a wide range of amenities and excellent transport links.

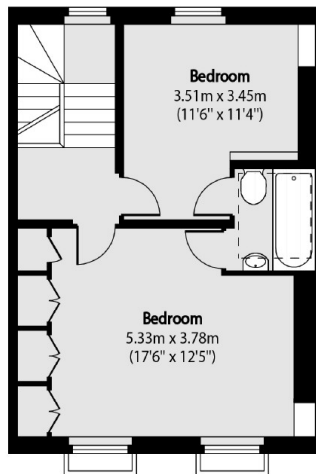
Features

- Three Double Bedrooms
- Two Bathrooms
- Modern
- Period Features
- Private Garden
- Central Location

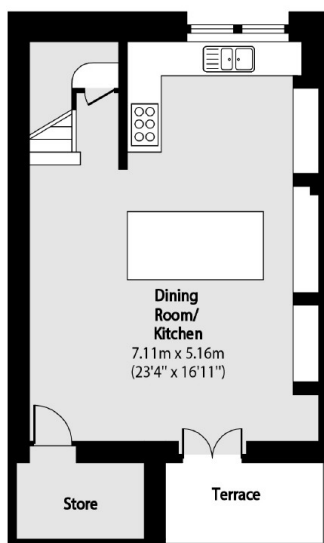
Sidney Square, London, E1



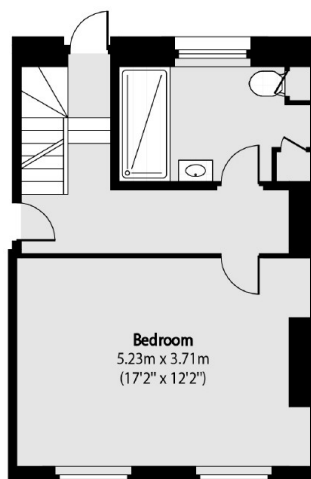
First Floor



Second Floor



Lower Ground Floor



Ground Floor

Total area (approx): 157.38 sq m (1694 sq. ft)

Terrace total area (approx): 3.99 sq m (43 sq. ft)