



## Morton Close, E1

£2,000 Per calendar month

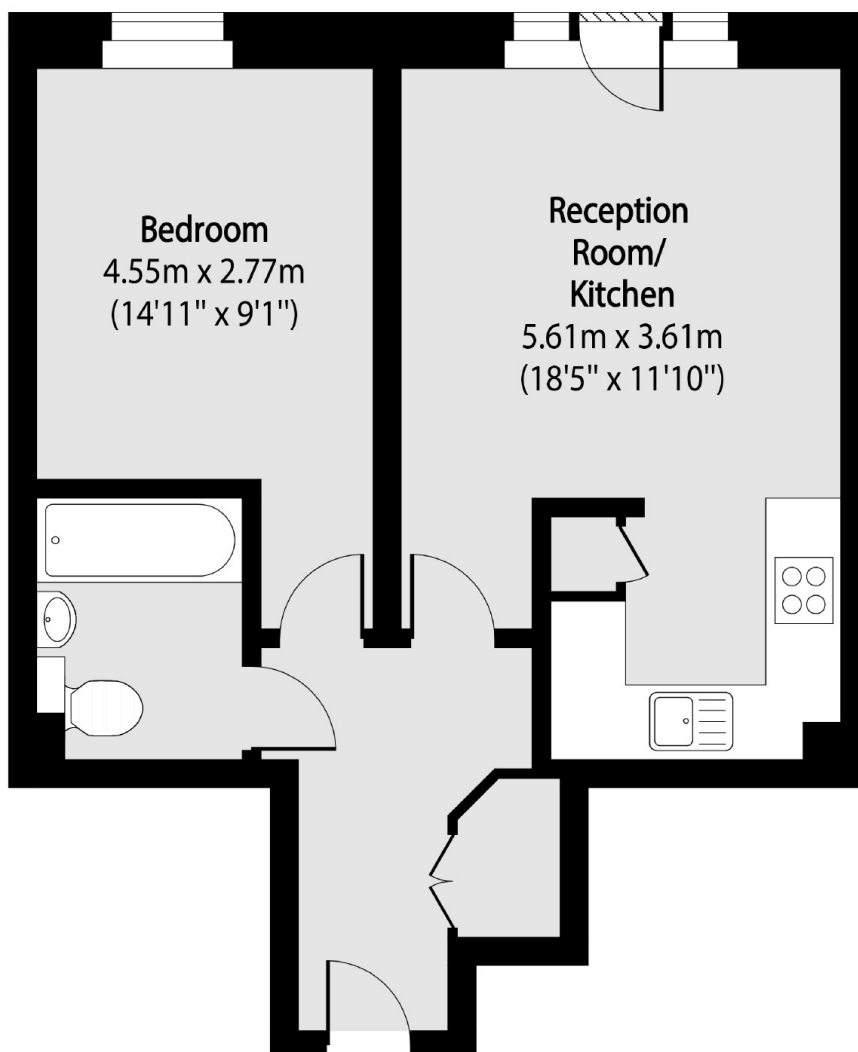
A bright and spacious, one double bedroom flat with an open plan kitchen. The property is part of a gated development and has bike storage for residents. Ideal for a couple or single occupant looking for true city living.

Morton Close is moments away from both Shadwell Stations and all the local shops, bars and restaurants that Shadwell and Aldgate have to offer.

### Features

- One Double Bedroom
- Open Plan Kitchen
- Gated Development
- Bike Storage
- Close to Transport Links
- Communal Garden

# Morton Close, London, E1



Total area (approx): 40.78 sq m (439 sq. ft)