



Candle Street, E1

£2,400 Per calendar month

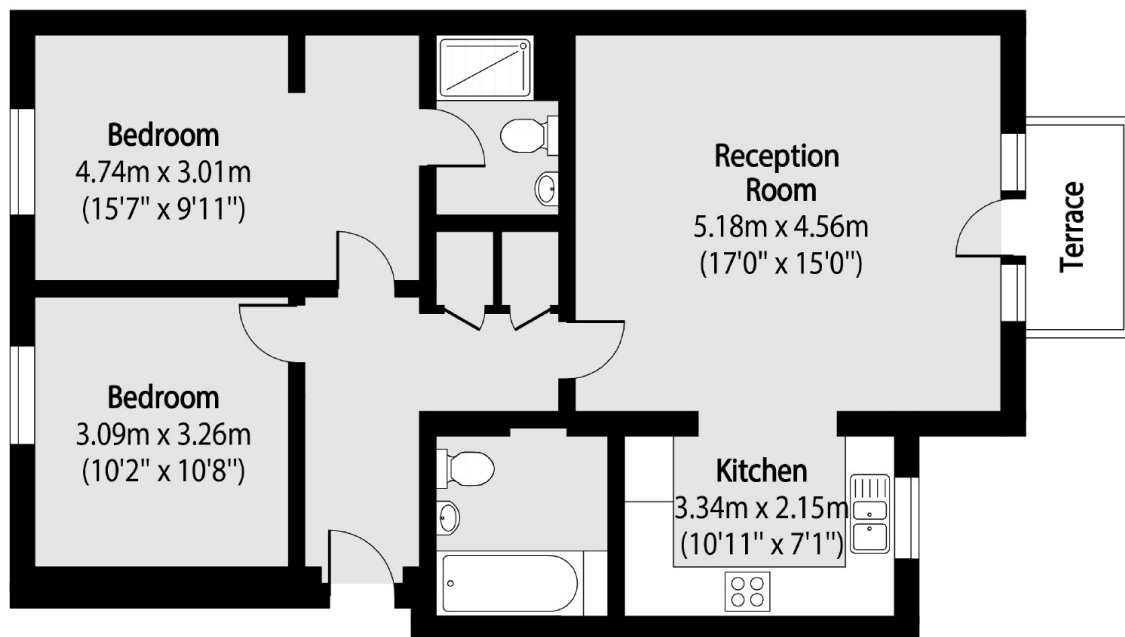
A spacious two double bedroom, two bathroom property with a semi open plan kitchen reception and private balcony. The property is situated in a quiet and secure development on Candle Street and is ideal for a couple or sharers looking for an easy commute to the City of Canary Wharf.

Ideally located between three stations; Stepney Green, Mile End and Limehouse there is a choice of convenient links into Canary Wharf, Central London and beyond.

Features

- Two Double Bedrooms
- Two Bathrooms
- Balcony
- Furnished
- Double Glazing
- Stepney Green

Candle Street,
London, E1



Total area (approx): 77.87 sq m (838 sq. ft)

Terrace total area (approx): 3.00 sq m (32 sq. ft)

Dexters

City
5 Sandys Row
London
E1 7HW
Lettings
020 7392 9111

Energy Rating: C. We aim to make our particulars both accurate and reliable. However they are not guaranteed; nor do they form part of an offer or contract. If you require clarification on any points then please contact us, especially if you're traveling some distance to view. Please note that appliances and heating systems have not been tested and therefore no warranties can be given as to their good working order.

RICS | Regulated
Estate Agent
and Letting Agent

[dexters.co.uk](https://www.dexters.co.uk)