



## New Drum Street, E1

£4,400 Per calendar month

A new two double bedroom apartment in Wiverton Tower with an additional study or third bedroom. The property has a larger open plan living and kitchen area, two double bedrooms, two bathrooms and is furnished to a high standard.

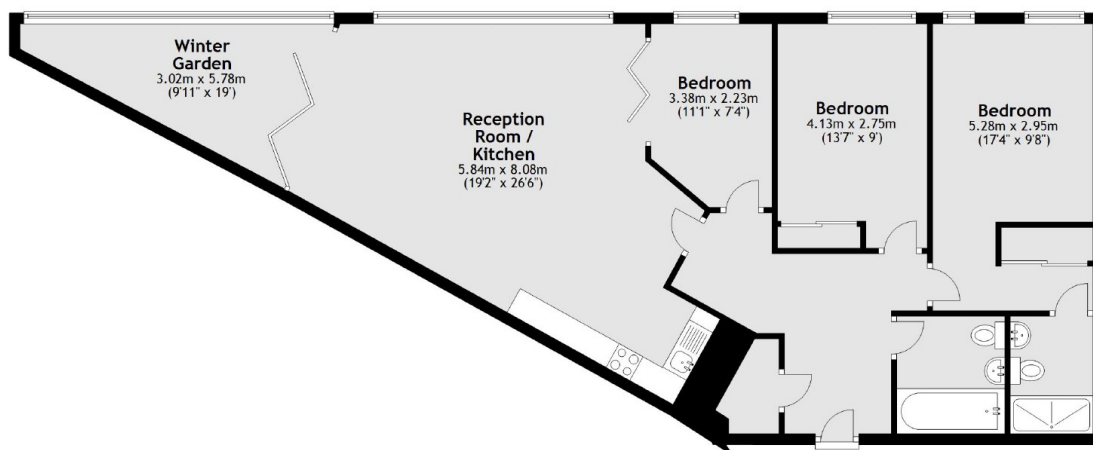
Wiverton Tower is in a prime location, as you are spoilt for choice when it comes to transport links with Aldgate and Tower Hill stations just moments away.

### Features

- Two Double Bedrooms
- Two Bathroom
- Internal Winter Garden
- Extra Study or Third Bedroom
- Residents Gym
- 24 Hour Concierge
- Parking

# New Drum Street, London, E1

16th Floor



Main area: Approx. 92.3 sq. metres (993.0 sq. feet)  
Plus winter garden, approx. 9.9 sq. metres (106.5 sq. feet)

## Dexters

City  
5 Sandys Row  
London  
E1 7HW  
Lettings  
020 7392 9111

Energy Rating: B. We aim to make our particulars both accurate and reliable. However they are not guaranteed; nor do they form part of an offer or contract. If you require clarification on any points then please contact us, especially if you're traveling some distance to view. Please note that appliances and heating systems have not been tested and therefore no warranties can be given as to their good working order.

 **RICS** | Regulated  
Estate Agent  
and Letting Agent

[dexters.co.uk](https://www.dexters.co.uk)