



Hemming Street, E1

£2,600 Per calendar month

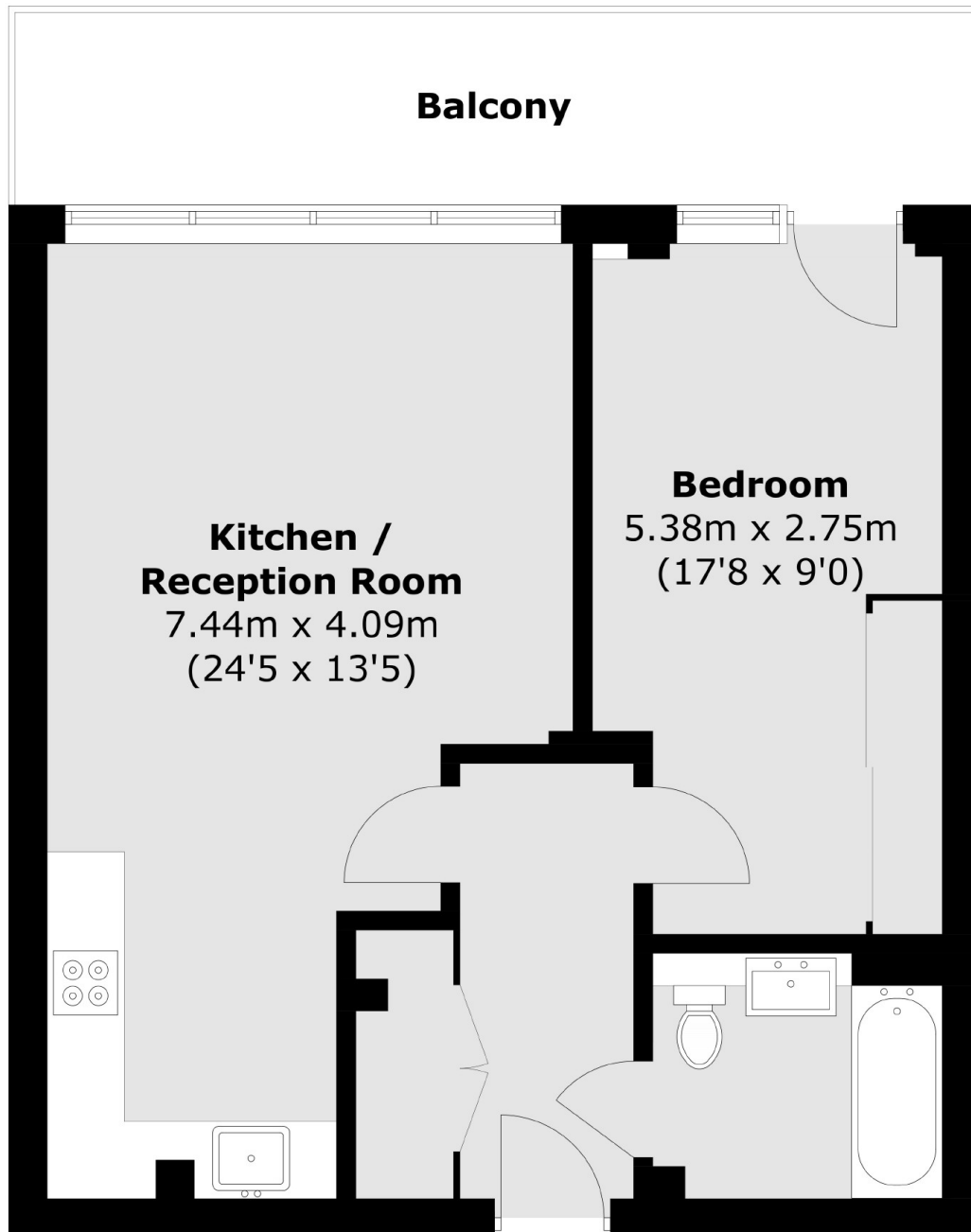
A modern one double bedroom apartment in Sirius House with its own private balcony. The property is located on the first floor in this modern development, coming with open plan kitchen and living room with super modern bathroom and plenty of built in storage.

The property is located in between Shoreditch High Street Station and Bethnal Green Underground, it is also perfectly located for the Bethnal Green Over Ground with great access to The City.

Features

- One Double Bedroom
- Spacious Balcony
- Secure Development
- Stunning City Views
- Open Plan
- Lift Access

Hemming Street,
London, E1



Total area (approx.): 52.0 sq. m (559.7 sq. ft)
Balcony : 11.1 sq. m (119.4 sq. ft)

Dexters

City
5 Sandys Row
London
E1 7HW
Lettings
020 7392 9111

Energy Rating: B. We aim to make our particulars both accurate and reliable. However they are not guaranteed; nor do they form part of an offer or contract. If you require clarification on any points then please contact us, especially if you're traveling some distance to view. Please note that appliances and heating systems have not been tested and therefore no warranties can be given as to their good working order.

 **RICS** | Regulated
Estate Agent
and Letting Agent

[dexters.co.uk](https://www.dexters.co.uk)