



## Arbour Square, E1

£2,500 Per calendar month

A smart three double bedroom property in Stepney Green available to let. The flat has a spacious and airy feel throughout and would suit a family or three friends living together.

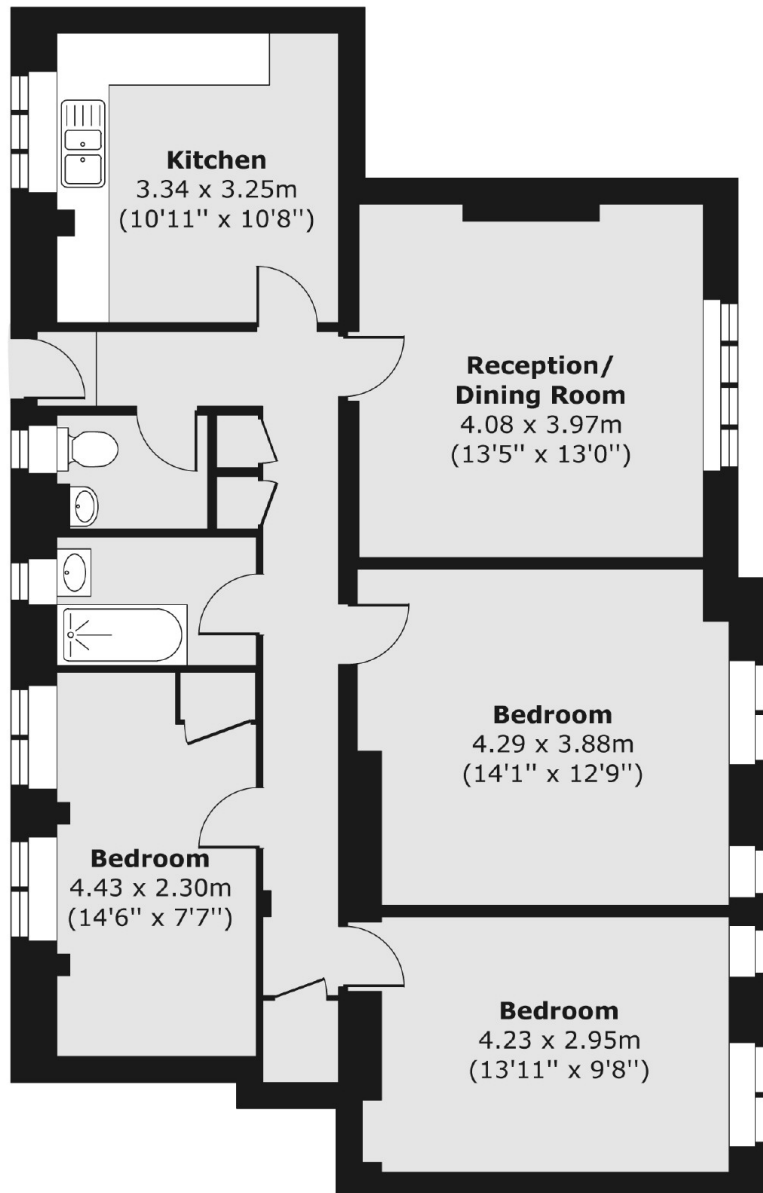
Arbour House is set just by Arbour Square and is located under half a mile from Limehouse Station and just over half a mile from Whitechapel and Stepney Green Underground Stations.

### Features

- Three Double Bedrooms
- Additional WC
- Separate Kitchen
- Wood Flooring
- Communal Garden
- Stepney Green

# Arbour Square, London, E1

## Third Floor



Total area (approx.) 87.33 sq. m (940 sq. ft)