



Arbour Square, E1

£2,600 Per calendar month

A lovely three bedroom property in Limehouse. The property has wooden floors throughout and comes with three double bedrooms, a reception room and a separate kitchen.

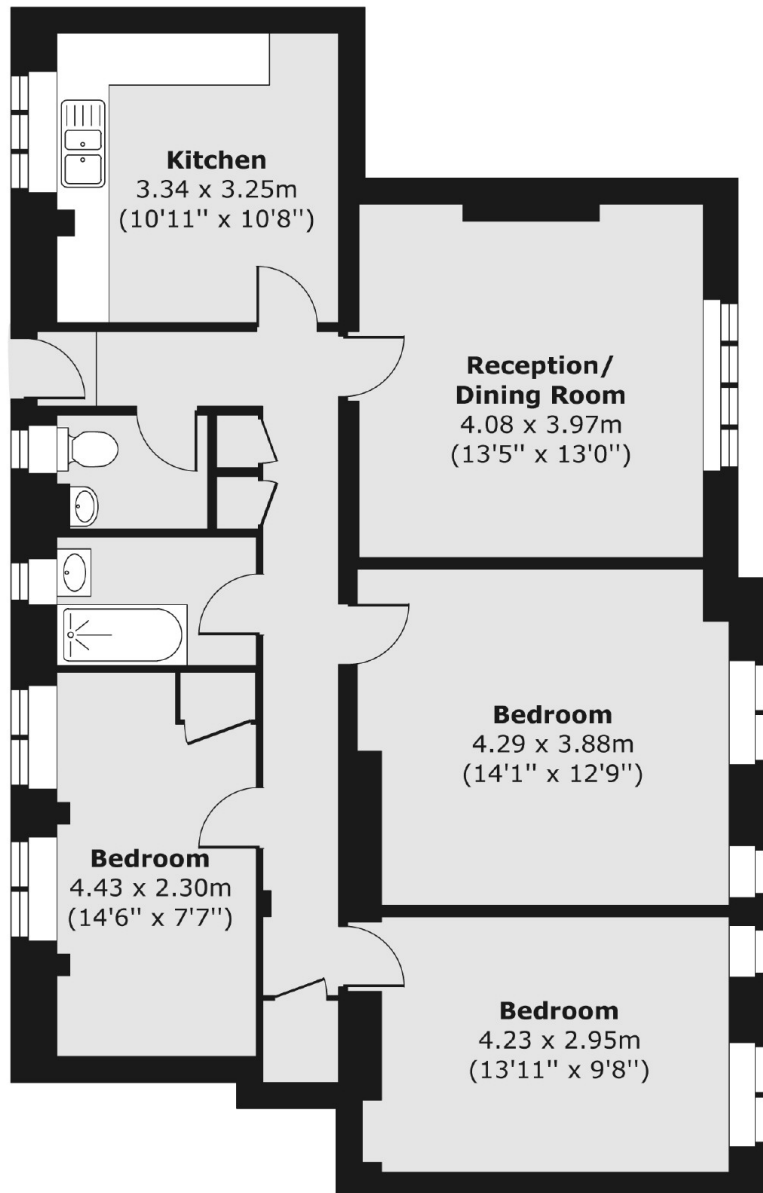
Arbour House is set just by Arbour Square and is located under half a mile from Limehouse Station and over half a mile from Whitechapel and Stepney Green Underground Stations.

Features

- Three Double Bedroom
- Central Location
- Separate Kitchen
- Unfurnished
- Separate WC
- Wooden floors throughout

Arbour Square, London, E1

Third Floor



Total area (approx.) 87.33 sq. m (940 sq. ft)