



Leyden Street, E1

£3,000 Per calendar month

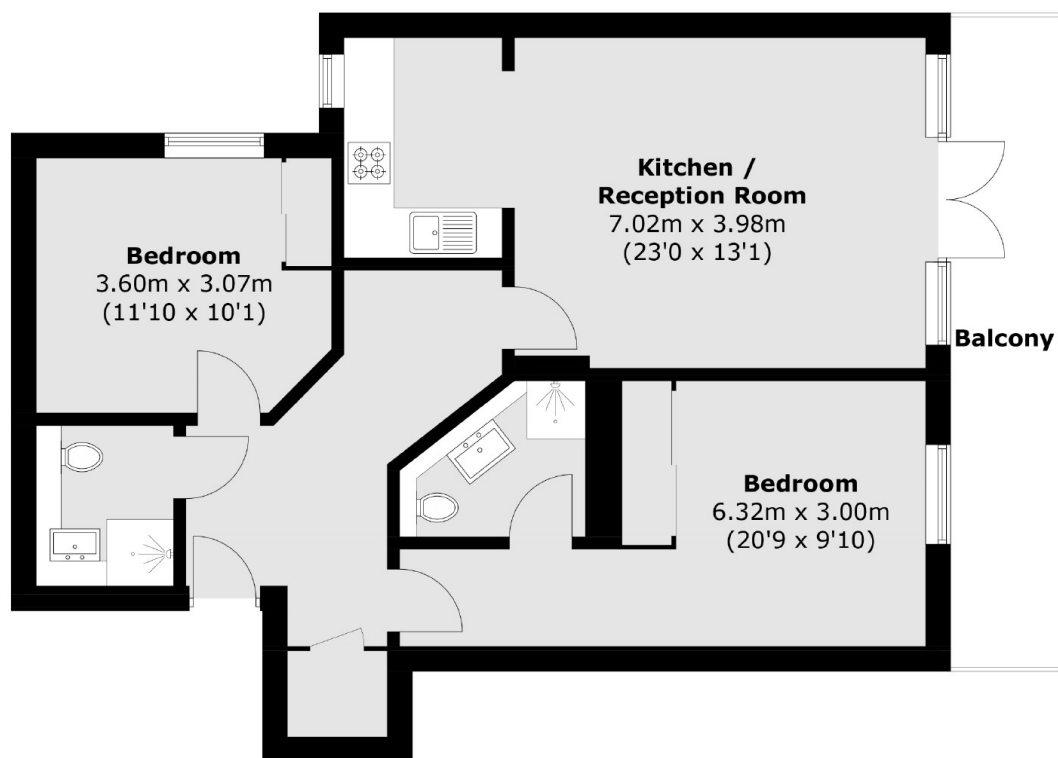
A perfectly located two double bedroom flat that is based in the heart of Spitalfields. The property has a great entertaining space with an open plan kitchen and a rustic style layout with a modern twist.

Leyden Street is moments away from Spitalfields market and Bishopsgate, so you are surrounded by the best shops, café, bars and restaurants in the City.

Features

- Two Double Bedrooms
- Two Bathrooms
- Day Time Porter
- Lift Access
- Close to transport
- Perfect City Property

Leyden Street,
London, E1



Total area (approx.): 72.4 sq. m (779.3 sq. ft)
Balcony: 10.2 sq. m (109.8 sq. ft)

Dexters

City
5 Sandys Row
London
E1 7HW
Lettings
020 7392 9111

Energy Rating: C. We aim to make our particulars both accurate and reliable. However they are not guaranteed; nor do they form part of an offer or contract. If you require clarification on any points then please contact us, especially if you're traveling some distance to view. Please note that appliances and heating systems have not been tested and therefore no warranties can be given as to their good working order.

 **RICS** | Regulated
Estate Agent
and Letting Agent

dexters.co.uk