



Aylward Street, E1

£3,100 Per calendar month

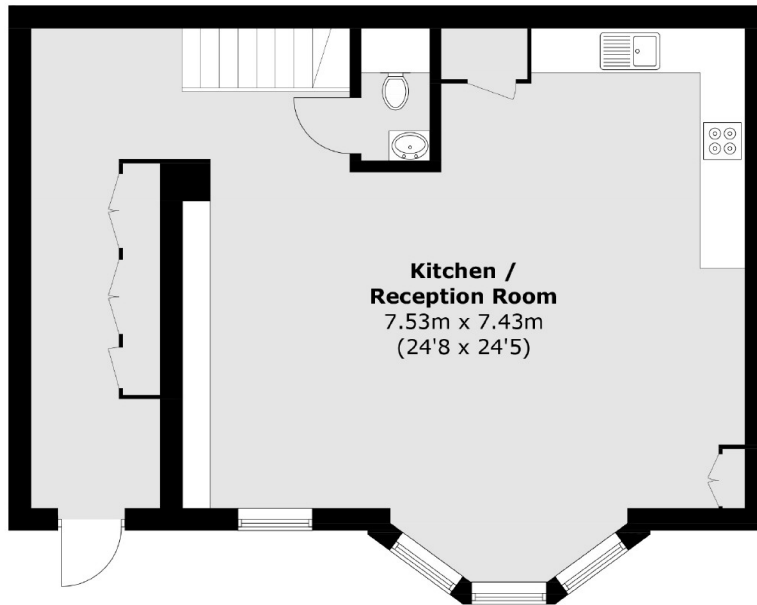
A three double bedroom maisonette in the fantastic Old Courthouse. This amazing conversion of the former Thames Magistrates Court and Police Station is almost 1600 square feet, with two bathrooms, a walk in wardrobe and double height ceilings.

Aylward Street is well connected with excellent transport links. Whitechapel, Limehouse, Stepney Green are all nearby, providing easy access to the Elizabeth, District, Hammersmith & City, and Overground lines as well as the DLR.

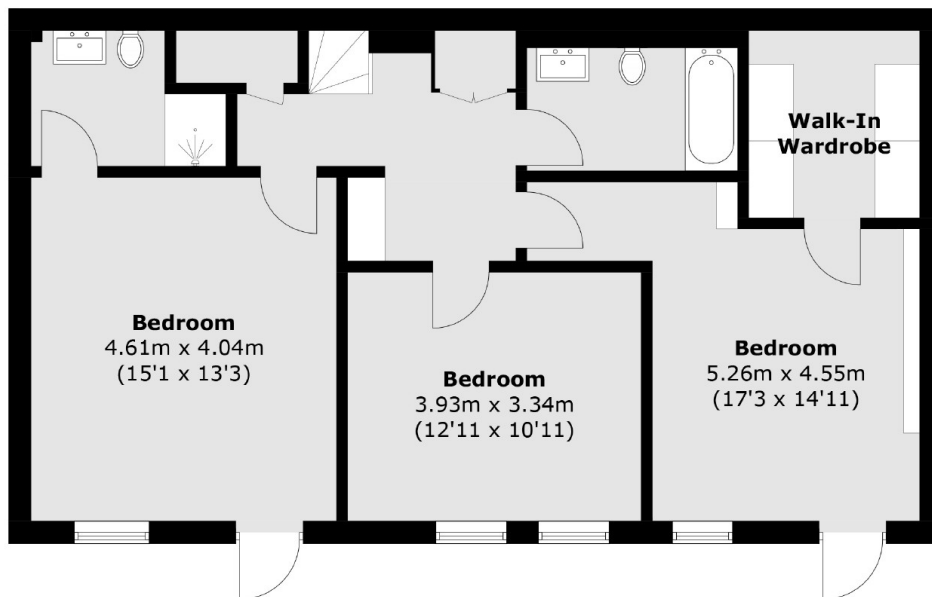
Features

- Three Double Bedrooms
- Two Bathroom
- Walk In Wardrobe
- Private Patio
- Split Level
- Stepney Green

Aylward Street,
London, E1



Ground Floor



Lower Ground Floor

Total area (approx.): 142.6 sq. m (1,534.9 sq. ft)