



Principal Place, EC2A

£5,417 Per calendar month

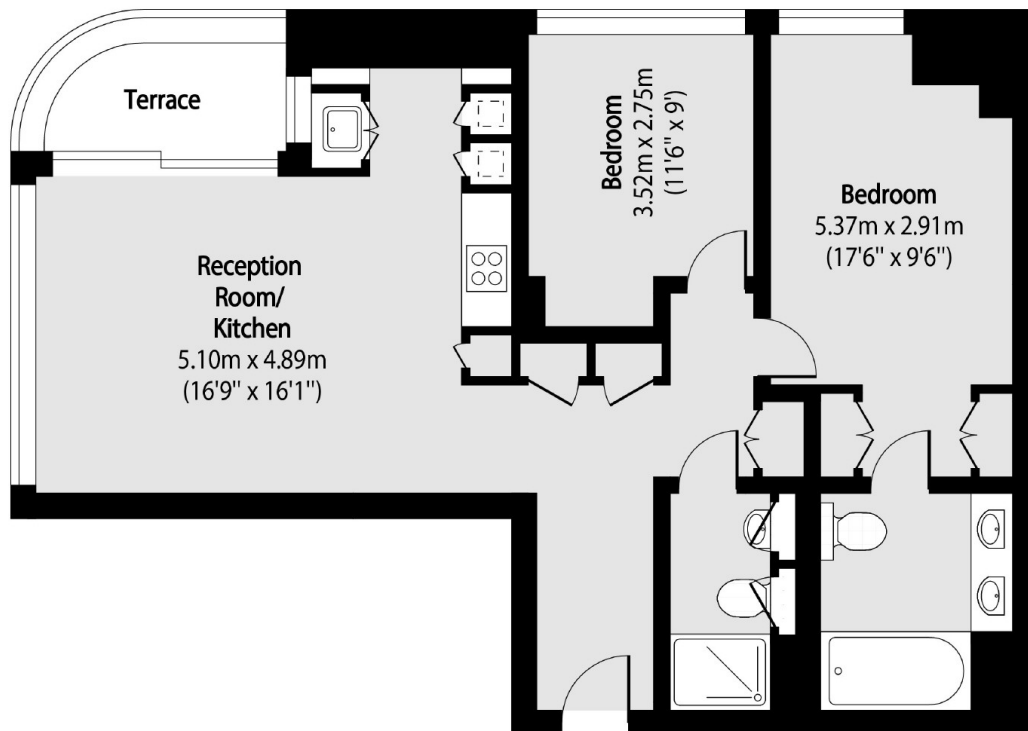
A two double bedroom, two bathroom apartment in Principal Tower available to let. Principle Tower is one of the areas most sought after residential developments, in part due to features including the 24 hour concierge, resident's gym, pool, sauna and steam room as well as communal meeting areas. This flat is perfect for entertaining with an extendable dining room table, an adjustable electronic chair and a sofa bed for guests.

Principal Tower is on the fringe of the City, just moments from Liverpool Street Station and Shoreditch High Street Overground. The development is also very close to a number of popular bars and restaurants in the area, as well as Spitalfields Market.

Features

- Two Double Bedrooms
- Two Bathrooms
- 29th Floor
- Balcony
- Health Club
- Concierge

Principal Place, London, EC2A



Total area (approx): 71.19 sq m (766 sq. ft)

Terrace total area (approx): 4.64 sq m (49 sq. ft)

Dexters

City
5 Sandys Row
London
E1 7HW
Lettings
020 7392 9111

Energy Rating: B. We aim to make our particulars both accurate and reliable. However they are not guaranteed; nor do they form part of an offer or contract. If you require clarification on any points then please contact us, especially if you're traveling some distance to view. Please note that appliances and heating systems have not been tested and therefore no warranties can be given as to their good working order.

 **RICS** | Regulated
Estate Agent
and Letting Agent

dexters.co.uk