



Middlesex Street, E1

£4,950 Per calendar month

Refurbished to the highest of standards, this two double bedroom penthouse apartment in the heart of The City will be perfect for a discerning tenant. This amazing property has two large double bedrooms, a modest study, a large open plan living and kitchen area, two bathrooms, a separate WC and a private roof terrace. An ideal property for a professional couple working in the City.

Astral House is located close to Liverpool Street Station with all the major underground and overground transport links and just moments from Spitalfields Market.

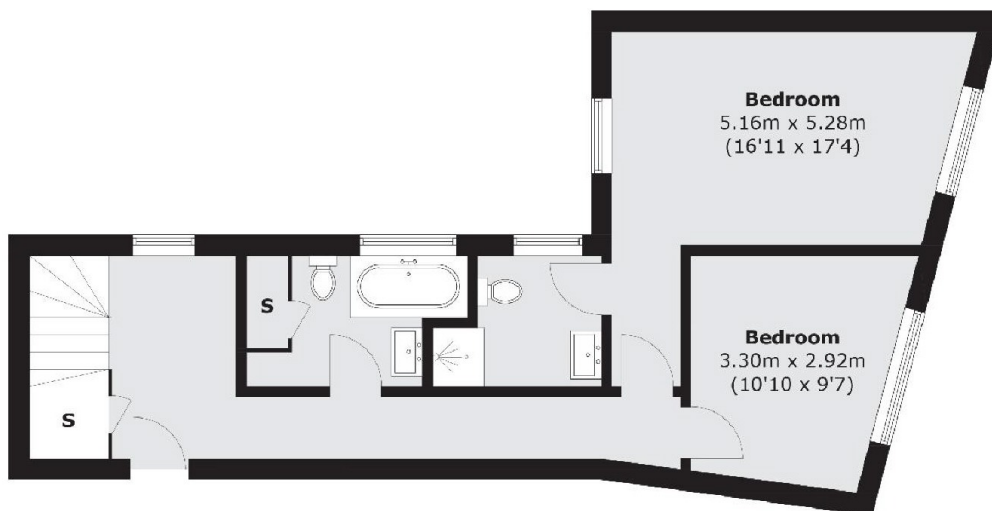
Features

- Two Double Bedrooms
- Top Floor
- Private Roof Terrace
- Open Plan Living Area
- Recently Refurbished
- Heart of The City

Middlesex Street, London, E1



Fourth Floor



Third Floor

Total area (approx.): 124.4 sq. m (1,339.0 sq. ft)
Roof Terrace (approx.): 19.8 sq. m (213.1 sq. ft)
(Excluding Eaves)