

Clark Street, E1

£3,000 Per calendar month

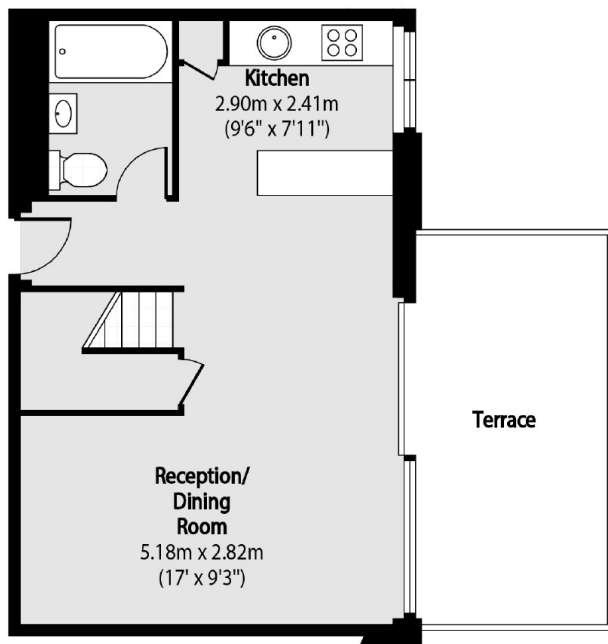
This very well presented two double bedroom, split level, loft style apartment has double height ceilings and floor to ceiling windows allowing plenty of natural light. The future resident will also enjoy a very large private terrace with direct views to Canary Wharf.

Stepney City Apartments is a gated development Just a short walk to Whitechapel Station giving easy access to both The City and Canary Wharf.

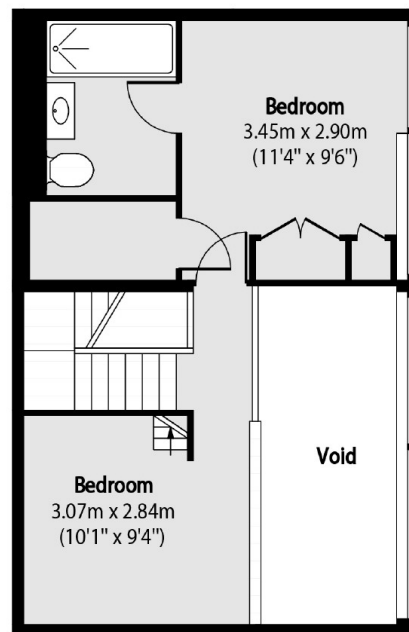
Features

- Two Double Bedrooms
- Two Bathrooms
- Mezzanine
- Open Plan
- Gated Development
- Stepney Green

Clark Street, London, E1



Third Floor



Fourth Floor



Total area (approx): 77.29 sq m (832 sq. ft)

(Including Mezzanine)

Terrace total area (approx): 13.66 sq m (147 sq. ft)