

Clark Street, E1

£3,000 Per calendar month

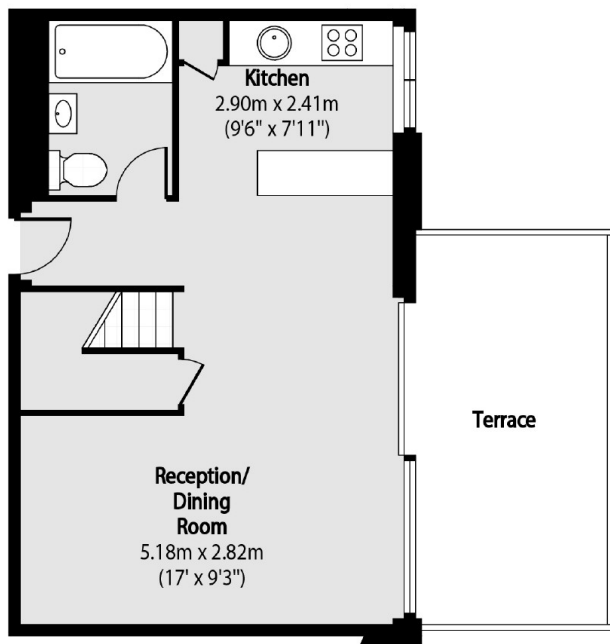
This very well presented two bedroom, split level, loft style apartment has double height ceilings and floor to ceiling windows allowing lots of natural light. The property has been refurbished to a modern specification and is located in a gated development.

Just a short walk to Whitechapel Station giving you great access to both The City and Canary Wharf.

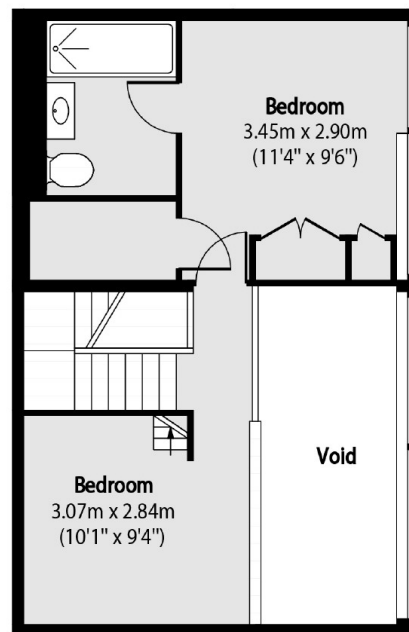
Features

- Two Double Bedrooms
- Three Bathrooms
- Mezzanine
- Modern
- Open Plan
- Gated Development

Clark Street,
London, E1



Third Floor



Fourth Floor



Total area (approx): 77.29 sq m (832 sq. ft)

(Including Mezzanine)

Terrace total area (approx): 13.66 sq m (147 sq. ft)

Dexters

City
5 Sandys Row
London
E1 7HW
Lettings
020 7392 9111

Energy Rating: C. We aim to make our particulars both accurate and reliable. However they are not guaranteed; nor do they form part of an offer or contract. If you require clarification on any points then please contact us, especially if you're traveling some distance to view. Please note that appliances and heating systems have not been tested and therefore no warranties can be given as to their good working order.

 **RICS** | Regulated
Estate Agent
and Letting Agent

dexters.co.uk