



Principal Place, EC2A

£5,000 PCM

A two double bedroom, two bathroom apartment in Principal Tower available to let. Principle Tower is one of the areas most sought after residential developments, in part due to features including the 24 hour concierge, resident's gym, pool, sauna and steam room as well as communal meeting areas.

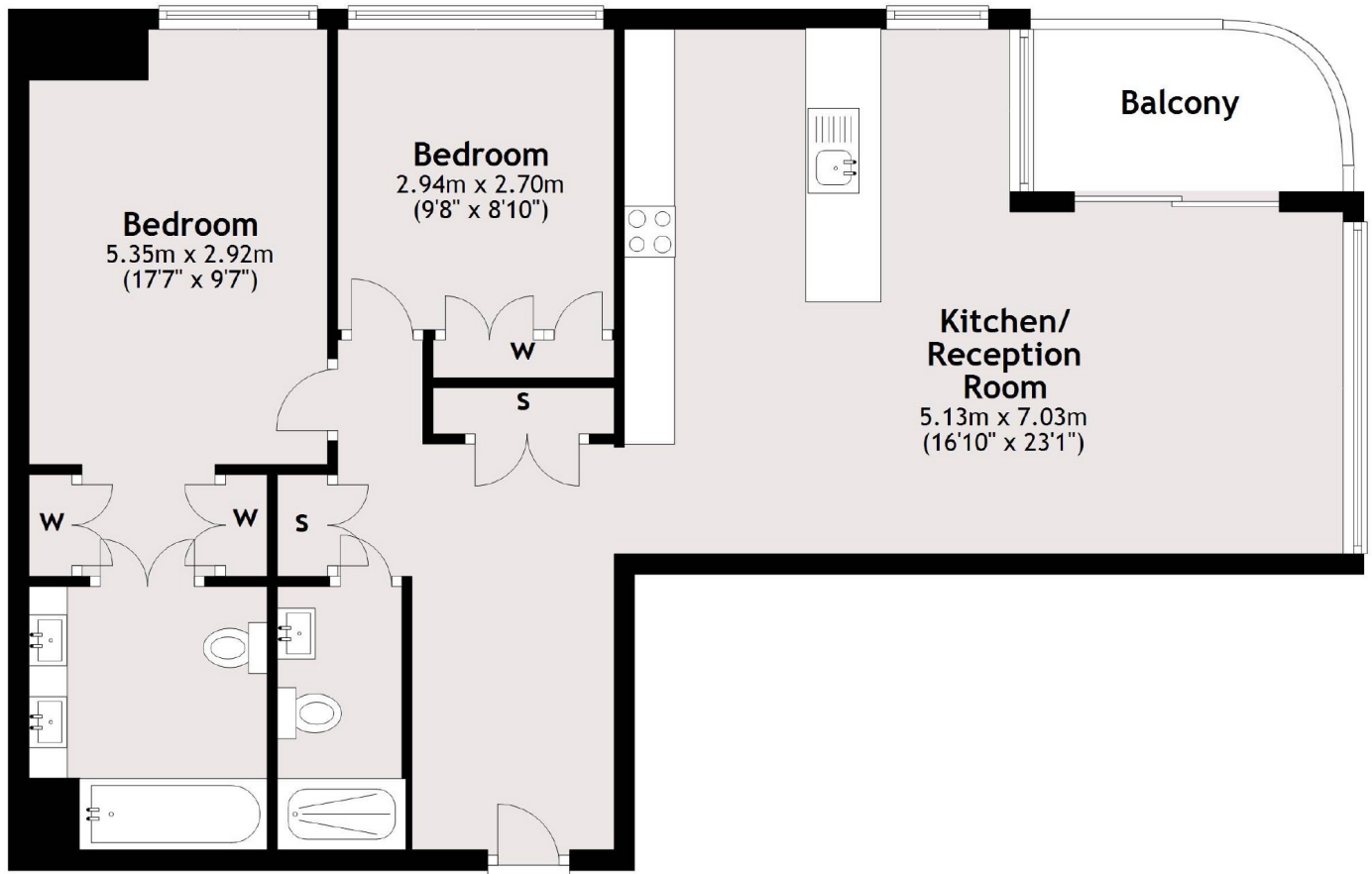
Principal Tower is on the fringe of the City, just moments from Liverpool Street Station and Shoreditch High Street Overground. The development is also very close to a number of popular bars and restaurants in the area, as well as Spitalfields Market.

Features

- Two Double Bedrooms
- Two Bathroom
- 21st Floor
- Balcony
- Health Club
- Concierge

Principal Place, London, EC2A

Twenty First Floor



Main area: Approx. 76.7 sq. metres (825.6 sq. feet)
Plus balconies, approx. 4.5 sq. metres (48.8 sq. feet)

Dexters

City
5 Sandys Row
London
E1 7HW
Sales
020 7392 9155

Energy Rating: B. We aim to make our particulars both accurate and reliable. However they are not guaranteed; nor do they form part of an offer or contract. If you require clarification on any points then please contact us, especially if you're traveling some distance to view. Please note that appliances and heating systems have not been tested and therefore no warranties can be given as to their good working order.

 **RICS** | Regulated
Estate Agent
and Letting Agent

dexters.co.uk