



Leyden Street, E1

£2,350 Per calendar month

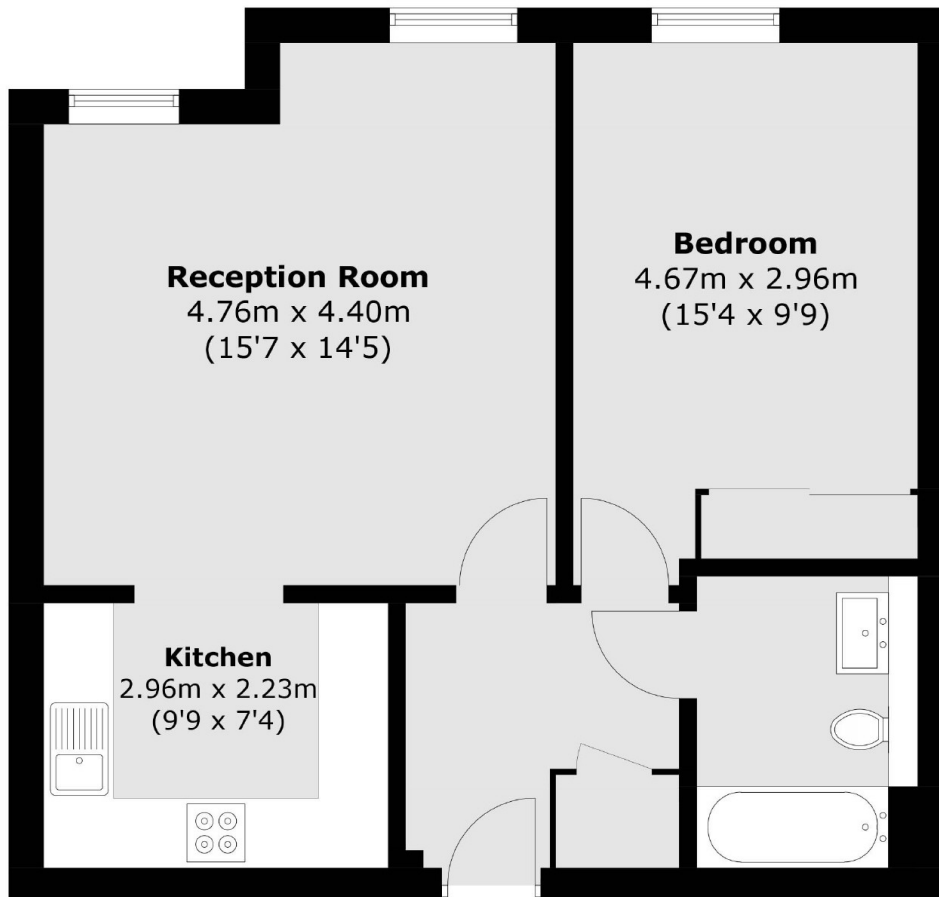
A one double bedroom apartment in St. Clements House. The apartment has a large living room with an open plan living room/ kitchen as well as a spacious double bedroom with built-in wardrobes.

St Clements House is perfectly located by Liverpool Street Station, with easy access throughout London and the popular Spitalfields Market is close by.

Features

- One Bedroom
- Gated Development
- Open Plan Living
- Lift Access
- Fantastic Location
- Furnished

Leyden Street,
London, E1



Total area (approx.): 52.0 sq. m (559.7 sq. ft)