



Folgate Street, E1

£3,000 Per calendar month

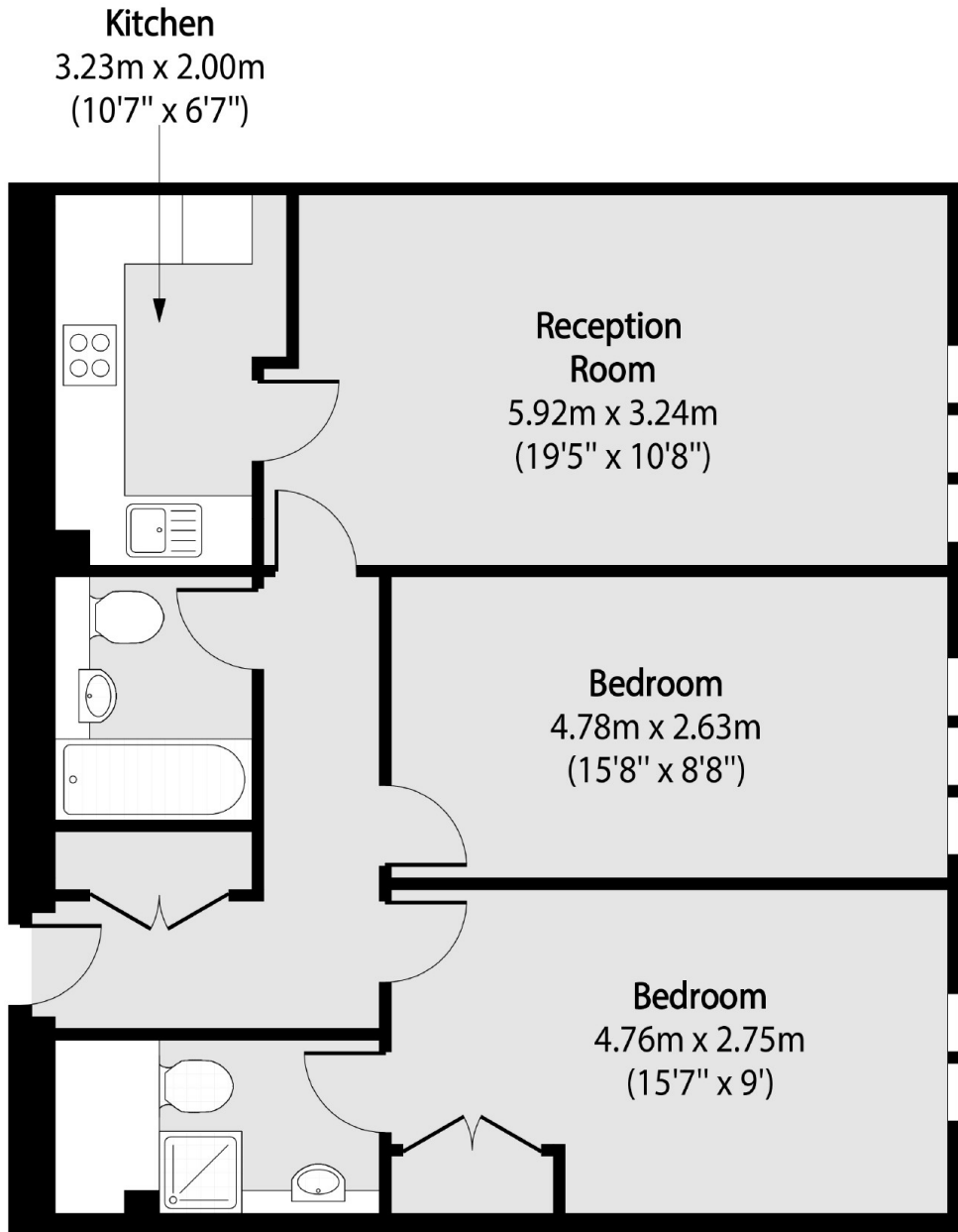
A two double bedroom, two bathroom apartment in the heart of Spitalfields on Folgate Street. The apartment has a spacious living room with a separate kitchen, and comes with onsite concierge and a parking space.

Folgate Street is a purpose built development on a cobbled street next to Spitalfields Market. An attractive road it is just around the corner from Liverpool Street Station and the City giving you excellent links across London.

Features

- Two Double Bedroom
- Two Bathroom
- On Site Porter
- Separate Kitchen
- Lift Access
- Parking
- Amazing Location

Folgate Street,
London, E1



Total area (approx): 67.94 sq m (731 sq. ft)