



Commercial Street, E1

£4,000 Per calendar month

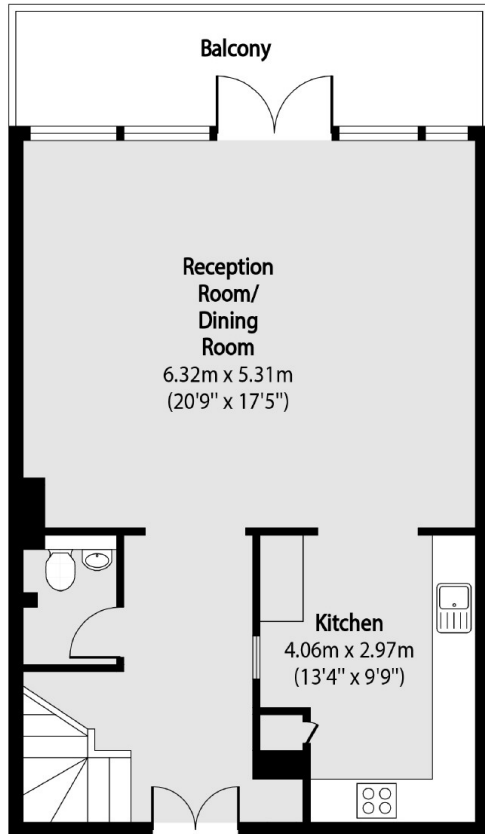
This split level beautifully presented two double bedroom warehouse conversion in the old telephone Exchange Building, the property has a large reception room and private balcony

Commercial Street is perfectly located for Spitalfields, Shoreditch and Brick Lane, where you are surrounded by some of the best bars, restaurants and boutique clothing shops in London.

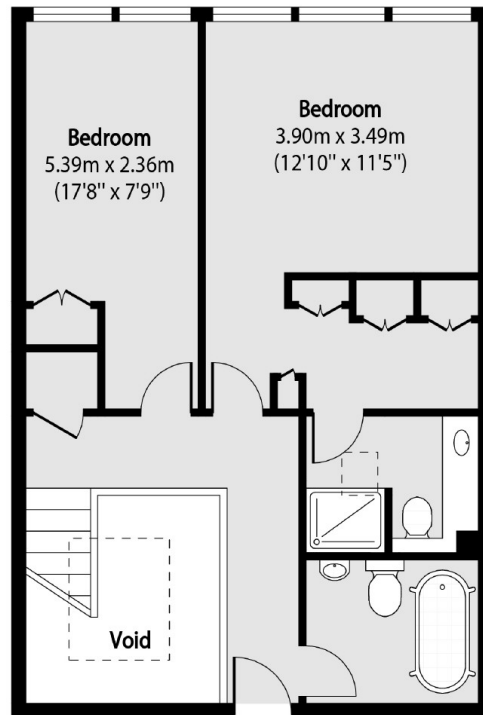
Features

- Penthouse
- 24 Hour Concierge
- Secure Development
- Fantastic Location
- Split Level
- Private Balcony

Commercial Street, London, E1



Fifth Floor



Sixth Floor

Total area (approx): 112.56 sq m (1212 sq. ft)

(Excluding Void)

Balcony area (approx): 10.40 sq m (112 sq. ft)