



Leman Street, E1

£750 Per week

This modern two bedroom, two bathroom penthouse apartment is based in the heart of the City in a gated development, with 24 hour concierge service and two private terraces. Perfect for a family or working professionals.

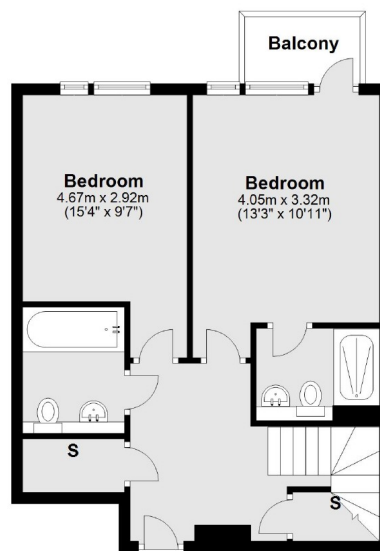
Christopher Court is situated between the vibrant Brick Lane and the trendy St Katherines Dock, where you have an array of bars and restaurants that overlook the Marina.

Features

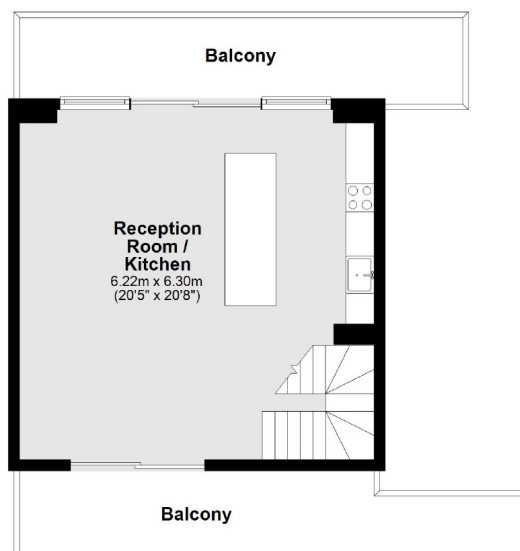
- Two Bedrooms
- Two Bathrooms
- Penthouse
- 24hr Concierge
- Split Level
- Two Private Terraces

Leman Street, London, E1

Fourth Floor



Fifth Floor



Main area: Approx. 87.8 sq. metres (945.5 sq. feet)
Plus balconies, approx. 27.2 sq. metres (293.1 sq. feet)

Contact

To arrange a viewing call our office on the number below or visit our website.



Energy Rating: B. We aim to make our particulars both accurate and reliable. However they are not guaranteed; nor do they form part of an offer or contract. If you require clarification on any points then please contact us, especially if you're traveling some distance to view. Please note that appliances and heating systems have not been tested and therefore no warranties can be given as to their good working order.