



91 Campsall Park Road, Campsall, Doncaster, DN6 9LF

Offers Invited £50,000

Offered to the market inviting CASH OFFERS ONLY is this ground floor maisonette within this semi rural location. With a lease remaining of 78 years, the property hosts upvc glazing and gas fired central heating, ideally placed for the amenities within the village.

Merryweathers

Merryweathers are leading Estate Agents in Rotherham, Barnsley, Doncaster, Maltby, Mexborough & the whole of South Yorkshire. Founded in 1832, the company has maintained a strong, independent tradition, and a passion for properties ever since. Whether you're looking to rent in Rotherham or move to Maltby, whether you're a Barnsley business or a first-time buyer in Doncaster or Mexborough, we've got the experience, the knowledge and the qualifications to help you progress perfectly.

Material Information

Council Tax Band - A

Tenure - Leasehold, 78 years remaining

Property Type - Ground Floor Maisonette

Construction Type - Brick built

Heating Type - Gas central heating

Water Supply - Mains water supply

Sewage-Mains Drainage

Gas Type - Mains Gas

Electricity Supply - Mains Electricity

All buyers are advised to visit the Ofcom website and open reach to gain information on broadband speed and mobile signal/coverage.

<https://www.openreach.com/>

<https://www.ofcom.org.uk/phones-telecoms-and-internet/advice-for-consumers/advice/ofcom-checker>

Parking type - Allocated

Building safety N/A

Restrictions N/A

Rights and easements N/A

Flooding – LOW

All buyers are advised to visit the Government website to gain information on flood risk. <https://check-for-flooding.service.gov.uk/find-location>

Planning permissions N/A

Accessibility features N/A

Coal mining area South Yorkshire is a mining area

All buyers are advised to check the Coal Authority website to gain more information on if this property is affected by coal mining.

<https://www.groundstability.com/public/web/home.xhtml>

We advise all clients to discuss the above points with a conveyancing solicitor.

Living Accommodation



Set beneath the front facing UPVC double glazed

window and incorporated into the roll edge work surface is a stainless steel drainer sink unit with mixer tap. The kitchen is fitted with a comprehensive range of wall, base and drawer units. With space and plumbing for an automatic washing machine.

The room extends to an area that would host a seating area and double bed.

Bathroom

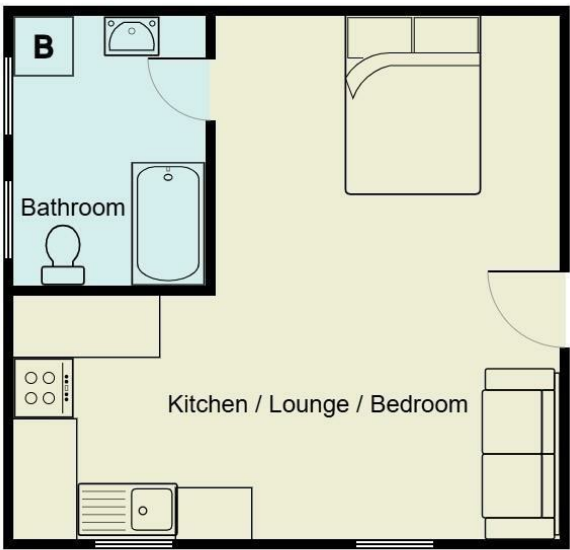


Hosting a three piece suite comprising of a paneled bath, a pedestal hand wash basin and low flush WC. With central heating radiator and opaque double glazed window.

External

Standing in communal grounds maintained under the service agreement, with one allocated parking space.

Floor Plan

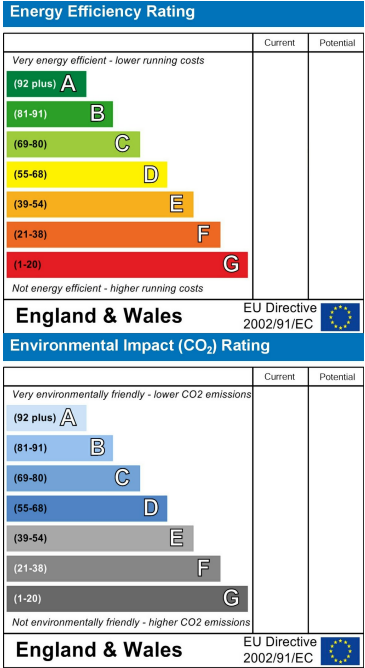


Area Map



These particulars, whilst believed to be accurate are set out as a general outline only for guidance and do not constitute any part of an offer or contract. Intending purchasers should not rely on them as statements of representation of fact, but must satisfy themselves by inspection or otherwise as to their accuracy. No person in this firms employment has the authority to make or give any representation or warranty in respect of the property.

Energy Efficiency Graph



www.merryweathers.co.uk

Merryweathers Mexborough 14 High Street, Mexborough, Rotherham, S64 9AS

Tel: 01709 590472 E-mail: mexborough@merryweathers.co.uk

Offices also at: Rotherham & Barnsley

Registered Office: 14-16 Ship Hill, Rotherham, S60 2HG
Registered in England and Wales No. 6679044

