



Sutton Court, Eastcote Avenue, West Molesey, KT8 2HB

Asking Price £289,950 Leasehold

- GROUND FLOOR APARTMENT
- KITCHEN
- COMMUNAL GARDEN

- 2 DOUBLE BEDROOMS
- LOUNGE/DINING ROOM
- PRIVATE STORAGE SHED

- 1 BATHROOM
- PRIVATE BALCONY
- PRIVATE STORAGE CUPBOARD

Description

An excellent opportunity to purchase this beautifully presented 2-double bedroom ground floor apartment. The property has the benefit of a balcony, a storage shed and a storage cupboard in the communal hallway. The property is spacious and overlooks well-tended communal gardens. The property would make an excellent purchase for a first-time buyer, downsizer or investor.



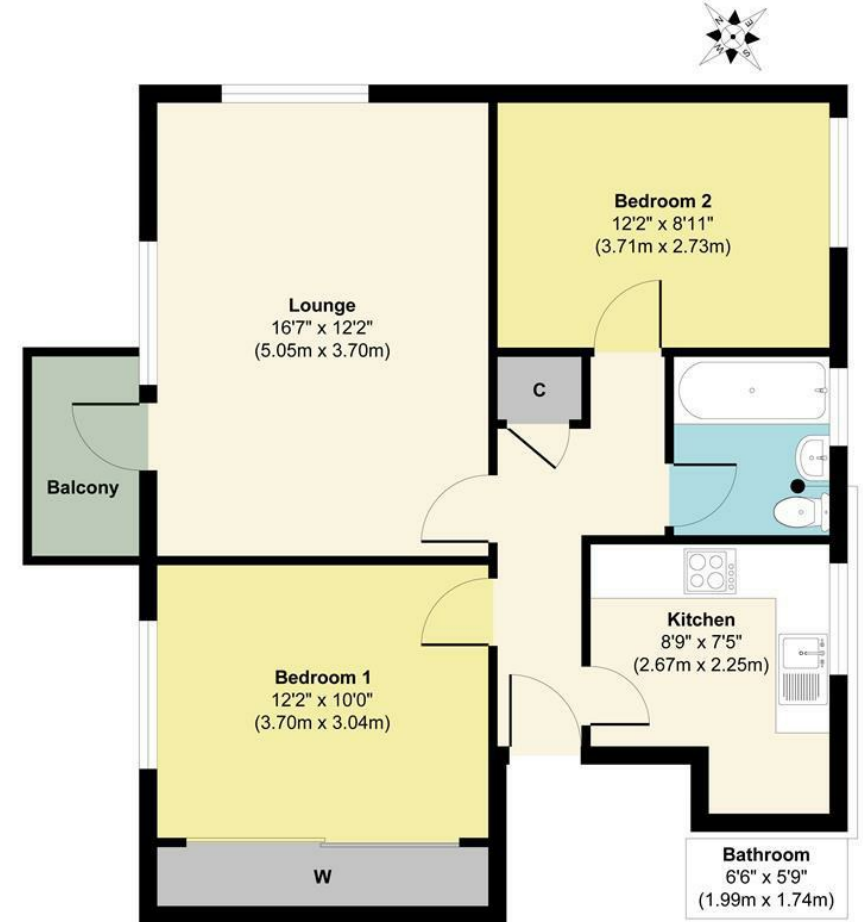
Energy Efficiency Rating		
	Current	Potential
<i>Very energy efficient - lower running costs</i>		
(92 plus) A		
(81-91) B		
(69-80) C		
(55-68) D		
(39-54) E		
(21-38) F		
(1-20) G		
<i>Not energy efficient - higher running costs</i>		
England & Wales		
		EU Directive 2002/91/EC

Council Tax Band

C

EPC Rating:

D



Floor Plan
Approximate Floor Area
661 sq. ft
(61.44 sq. m)

Approx. Gross Internal Floor Area 661 sq. ft / 61.44 sq. m

Illustration for identification purposes only, measurements are approximate, not to scale.
Produced by Elements Property