



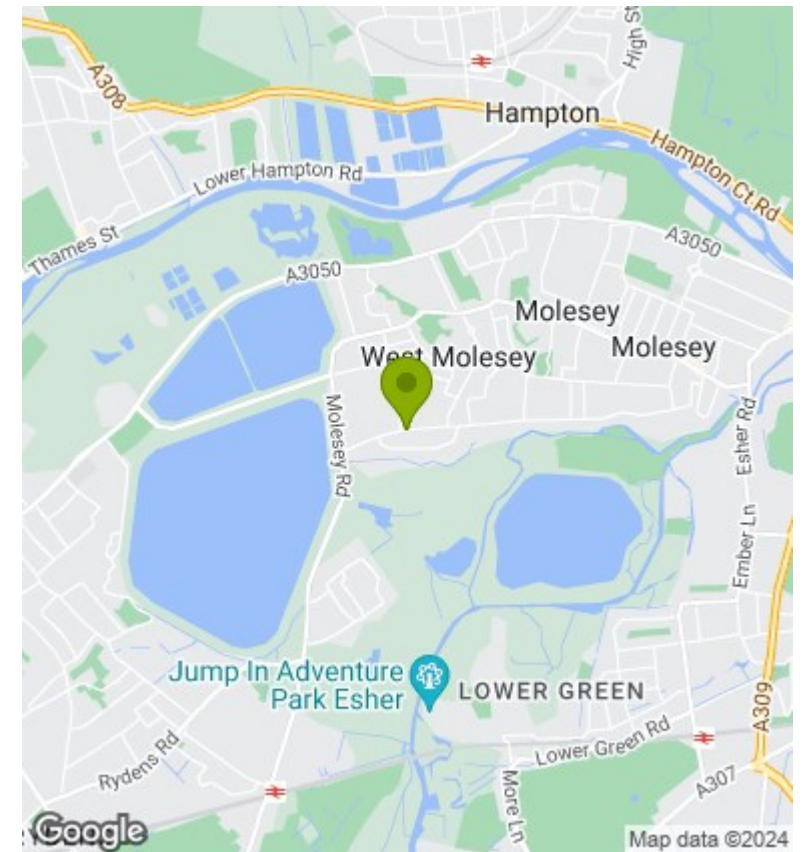
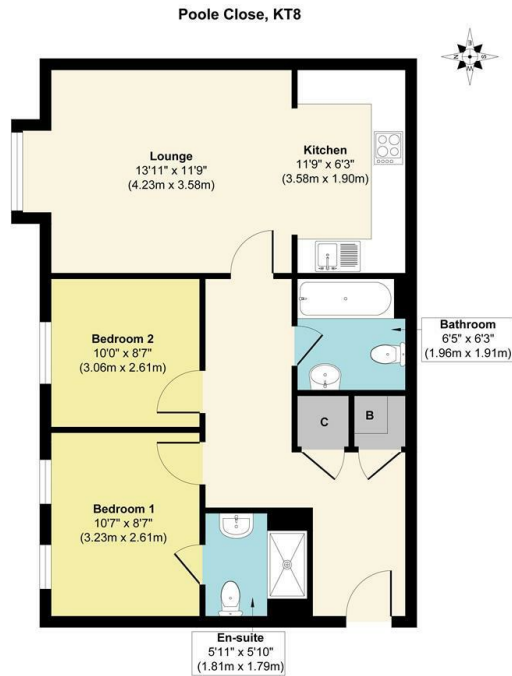
Timothy Place, Pool Close, West Molesey, KT8 2HR

Asking Price £280,000 Leasehold

- GROUND FLOOR APARTMENT
- OPEN PLAN LIVING/DINER/KITCHEN
- EPC RATING - C
- SECURITY ENTRY PHONE SYSTEM

- NO ONWARD CHAIN
- EN-SUITE & FAMILY BATHROOM
- LONG LEASE

- 2 DOUBLE BEDROOMS
- COMMUNAL GARDENS
- UNALLOCATED RESIDENTIAL PARKING



Directions

RAWLINSON & WEBBER are pleased to offer for sale this beautifully presented, two double bedroom ground-floor apartment in Timothy Place, a modern purpose built development in West Molesey. This property benefits from having no onward chain, open plan living/kitchen/dining, 1 family bathroom as well as unallocated residential parking.

Other benefits include; double-glazing, security entry phone system, long lease and well kept communal gardens. Your early internal viewing is highly recommended.

130 Years Remaining on Lease

Energy Efficiency Rating		
	Current	Potential
Very energy efficient - lower running costs		
(92 plus) A		
(81-91) B		81
(69-80) C	74	
(55-68) D		
(39-54) E		
(21-38) F		
(1-20) G		
Not energy efficient - higher running costs		
England & Wales	EU Directive 2002/91/EC	