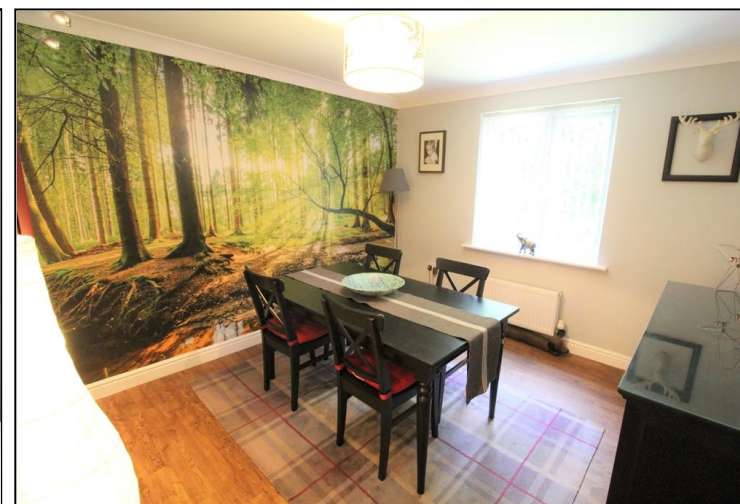
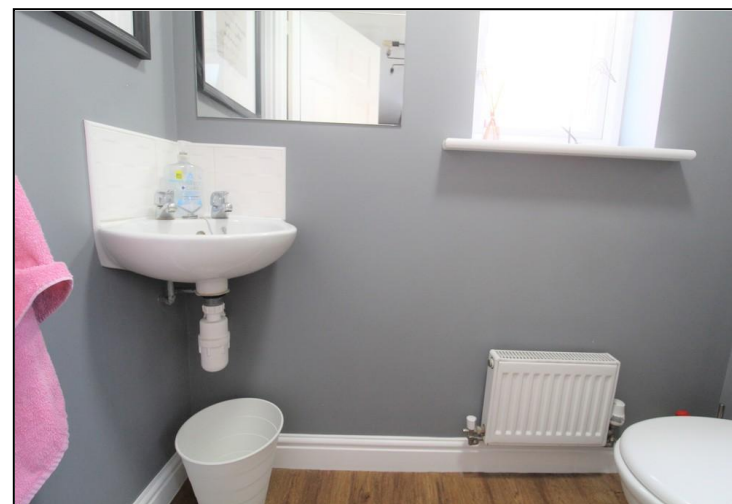


# PORTFIELD

GARRARD & WRIGHT

INDEPENDENT ESTATE AGENTS • SURVEYORS & VALUERS RESIDENTIAL LETTING AGENTS • NEW HOME SALES



## Armthorpe 9 Barber Close

A stylish 4 bedroom detached family home nestled within the cul de sac with open field views to rear and woodland making this a very private setting, stylish fittings, contemporary decoration and double garage. Comprises ; hallway, downstairs wc, lounge with sliding patio door, dining room, breakfast kitchen, utility, landing, 4 bedrooms, ensuite and bathroom, gardens to front side and rear, hot tub and shed included. Viewing highly recommended.

OFFERS IN REGION OF  
£315,000