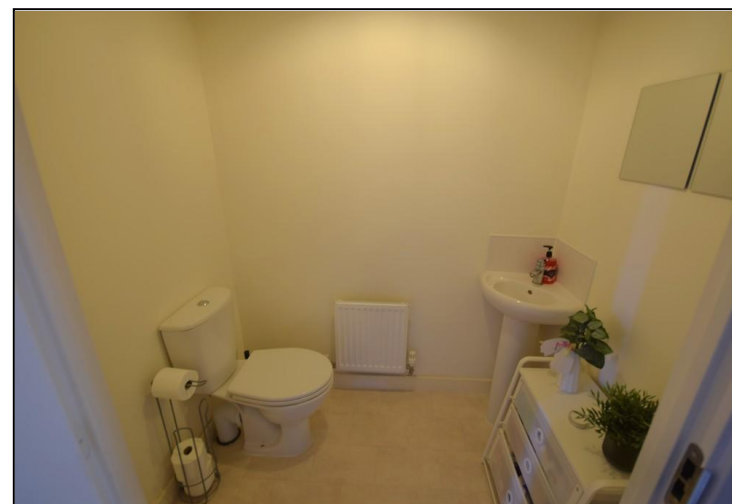
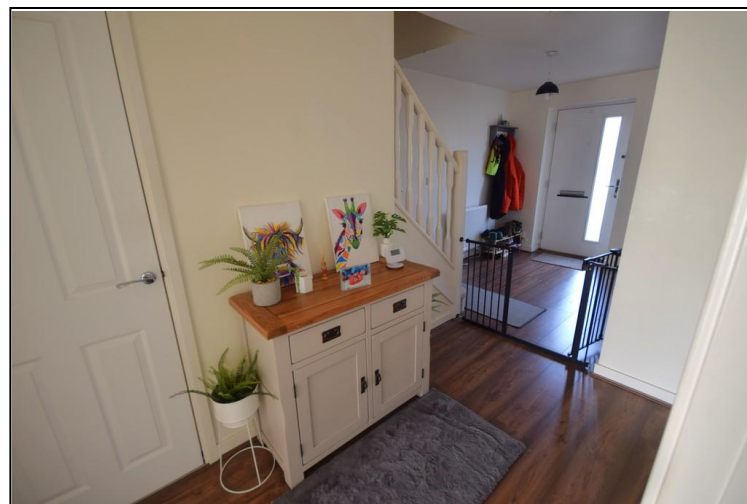
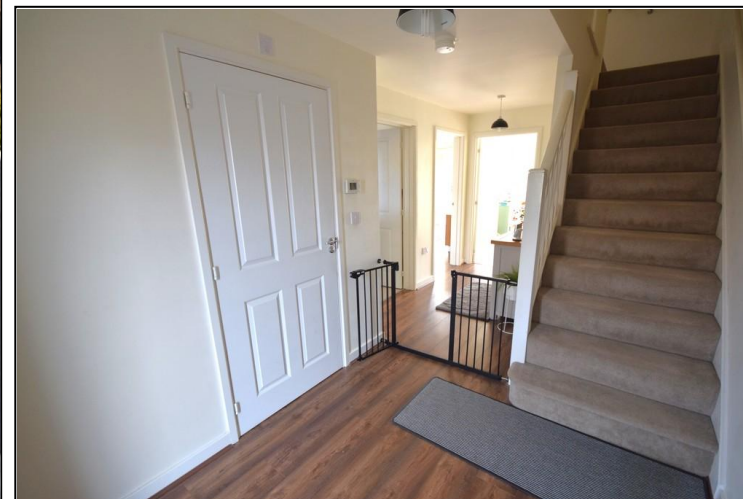


PORTFIELD

GARRARD & WRIGHT

INDEPENDENT ESTATE AGENTS • SURVEYORS & VALUERS RESIDENTIAL LETTING AGENTS • NEW HOME SALES



Edlington 9 Isinglass Drive

A deceptively spacious four bedroom semi detached home providing modern fixtures and fittings, contemporary decoration, large rear family garden, gas heating, double glazing, two allocated parking spaces and comprises of entrance hallway, downstairs wc, lounge with upvc patio doors out to the rear gardens, separate dining room or versatile playroom/study, landing, four bedrooms and stylish bathroom suite with shower over bath. There are lovely lawned rear gardens fence enclosed and with walkway. Viewing highly recommended.

**ASKING PRICE OF
£210,000**