

PORTFIELD

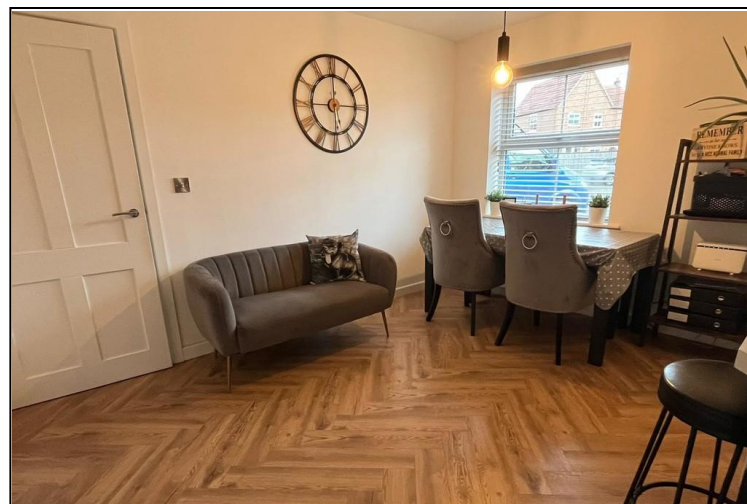
GARRARD & WRIGHT

INDEPENDENT ESTATE AGENTS • SURVEYORS & VALUERS RESIDENTIAL LETTING AGENTS • NEW HOME SALES

Epworth

29 Axholme Drive

A stylish and modern four bedroom detached family home situated in this sought after location. The property comprises of: Entrance hallway, downstairs WC, attractive open plan dining kitchen with various appliances, utility, lounge with patio doors out to the rear gardens, landing, four bedrooms, ensuite bathroom, lawned gardens, patios, driveway and garage. Viewing highly recommended.



ASKING PRICE OF
£320,000