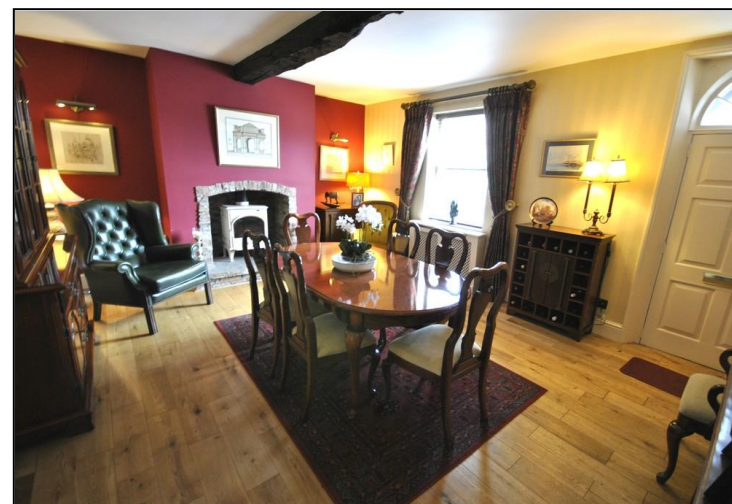


PORTFIELD

GARRARD & WRIGHT

INDEPENDENT ESTATE AGENTS • SURVEYORS & VALUERS RESIDENTIAL LETTING AGENTS • NEW HOME SALES



Misson West Street

Don't miss this stunning 5 bedroom Grade 2 listed Georgian farmhouse, beautifully transformed into an elegant home, complimented by traditional features, with a twist of modern decoration and presentation. Boasting a large lawned and well stocked garden with patios, green house, workshop/log shed, large double garage and driveway. Comprising of dining/reception room, lounge, garden lounge, kitchen, larder, utility, shower room, wine cellar, landing, 5 bedrooms, ensuite and family bathroom. This family home could appeal to a variety of purchasers due to its size, with growing teenagers or independent relative in mind. Viewing highly recommended.

OFFERS IN REGION OF
£650,000