

PORTFIELD

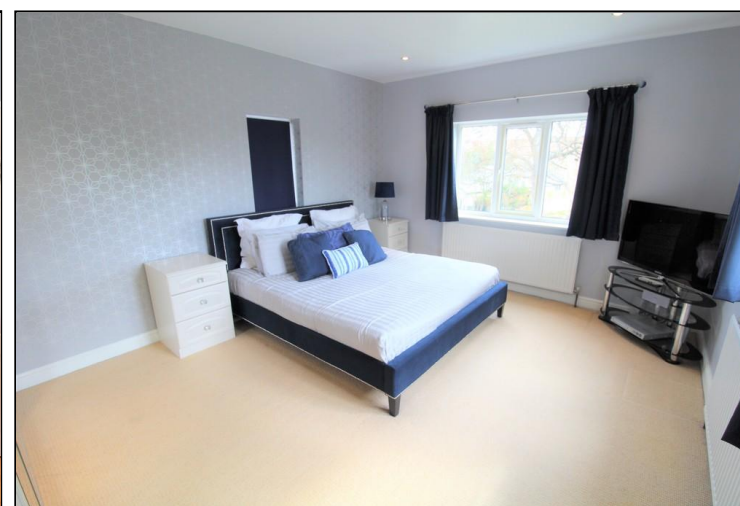
GARRARD & WRIGHT

INDEPENDENT ESTATE AGENTS • SURVEYORS & VALUERS RESIDENTIAL LETTING AGENTS • NEW HOME SALES

Tickhill

Dadsley Road

A superb 4 bedroom detached family home situated in this lovely position along Dadsley Road with countryside views, large living accommodation, breakfast kitchen, gas heating, double glazing, excellent decoration and fronted views towards a paddock. The property briefly comprises of ; entrance porch, hallway, spacious lounge/diner with UPVC patio doors, sitting room/snug, breakfast kitchen, utility, downstairs wc, landing, 4 bedrooms, ensuite, bathroom suite and stunning front and rear gardens. Viewing highly recommended.



OFFERS IN REGION OF
£450,000