

Coosane 19A Weston Hills Road Low Fulney Spalding



Offers Over £1,000,000

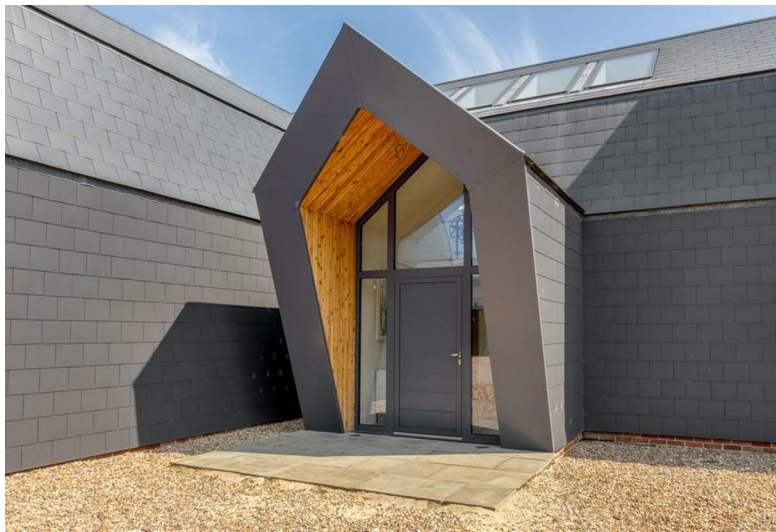
This Grand Designs Dutch Barn House is a celebration of local heritage with a contemporary twist, offering a unique and sustainable living experience in the beautiful Lincolnshire countryside.

Featured in the acclaimed TV series "Grand Designs" in 2021, this unique self-built property offers a blend of contemporary design and local architectural heritage. Situated in the heart of Lincolnshire, this striking home takes inspiration from the Dutch barn-style houses, a characteristic feature of the area. These barns, with their distinctive mansard roofs, steeply sloping gables, and dormer windows, are a nod to the region's historical roots.

The exterior of this Dutch barn-inspired home boasts brick pillars and a sleek black tiled roof, with dark tiles cleverly minimising the building's scale. Designed with inspiration from the traditional local structures, the house showcases a modern interpretation of these elements. The multi-angled, steel-framed structure is a masterpiece, featuring glamorously glazed gables, twin brick chimneys, and all-over tile cladding that blend seamlessly into the landscape.

This innovative design is not just about aesthetics; it's built for sustainability. The house is equipped with extensive insulation, a mechanical ventilation with heat recovery (MVHR) system, and a solar photovoltaic (PV) array, complemented by a ground-source heat pump. Together, these systems ensure the home generates more electricity than it consumes, making it an eco-friendly choice for modern living.

Inside, the house offers a vast, open-plan living space, perfect for accommodating large family gatherings. The vaulted interior, centered around a striking wood-burning stove set against a brick chimney, provides warmth and character. The kitchen flows effortlessly into the living and dining areas, creating a versatile space ideal for entertaining.







The atrium-glazed entrance door opens into a cathedral-style vaulted reception hallway, created by a multi-angled steel-framed structure with a glazed gable and a giant brick chimney with up lighters inset into the floor, at each end.

The ground floor features an open-plan design, from hallway, to kitchen to family lounge with only the utility room, pantry, cloakroom, and study, accessed via barn-style sliding doors. A wood-burning stove stands in the center of one of the large glazed gables which creates a focal point in the centre of the family lounge, with bi-fold doors on either side. The second lounge has inbuilt wall storage behind panelled doors with large bi-folds to the rear patio area.

The whole ground floor has underfloor heating beneath porcelain tiles with inset lighting throughout.

The kitchen is ideal for large family gatherings as the space flows seamlessly into the living and dining areas, divided by an island breakfast bar. The kitchen is styled with navy blue shaker cupboard doors, complemented by copper handles and wood style countertops. With integrated dishwasher and space for American Fridge Freezer. The pantry offers ample storage space for food, drinks, crockery, cutlery and other kitchen essentials. The family area focuses on the multi fuel wood burner which is inset into brick chimney with inset uplighters.

The utility room offers essential, multifunctional space that helps keep the rest of the home organised, with space for washing machine, tumble dryer and secondary inset sink. With access to the cloakroom which comprises of a toilet and hand basin.

The plant room is the engine room of this property and contains the 'comms' cabinet, internet, central TV system, ground source boiler, hot water tank and heat recovery system.

The study with window to side elevation and porcelain tiled flooring with under floor heating, has a built in workspace and is designed to be a quiet, focused environment for professional work, study, or creative pursuits.

A bespoke wood and steel staircase leads up to the first-floor landing, illuminated by four large rooflights.



Ground Floor Measurements

Entrance:

8'0" x 6'9" (2.45m x 2.08m)

Hall

23'5" x 14'1" (7.14m x 4.30m)

Kitchen Family Room:

17'0" x 23'9" (5.19m x 7.26m)

Pantry:

5'0" x 9'3" (1.54m x 2.82m)

Utility:

8'7" x 9'3" (2.64m x 2.82m)

Family Lounge:

29'5" x 23'9" (8.98m x 7.26m)

Lounge:

21'6" x 25'1" (6.57m x 7.66m)

Cloakroom

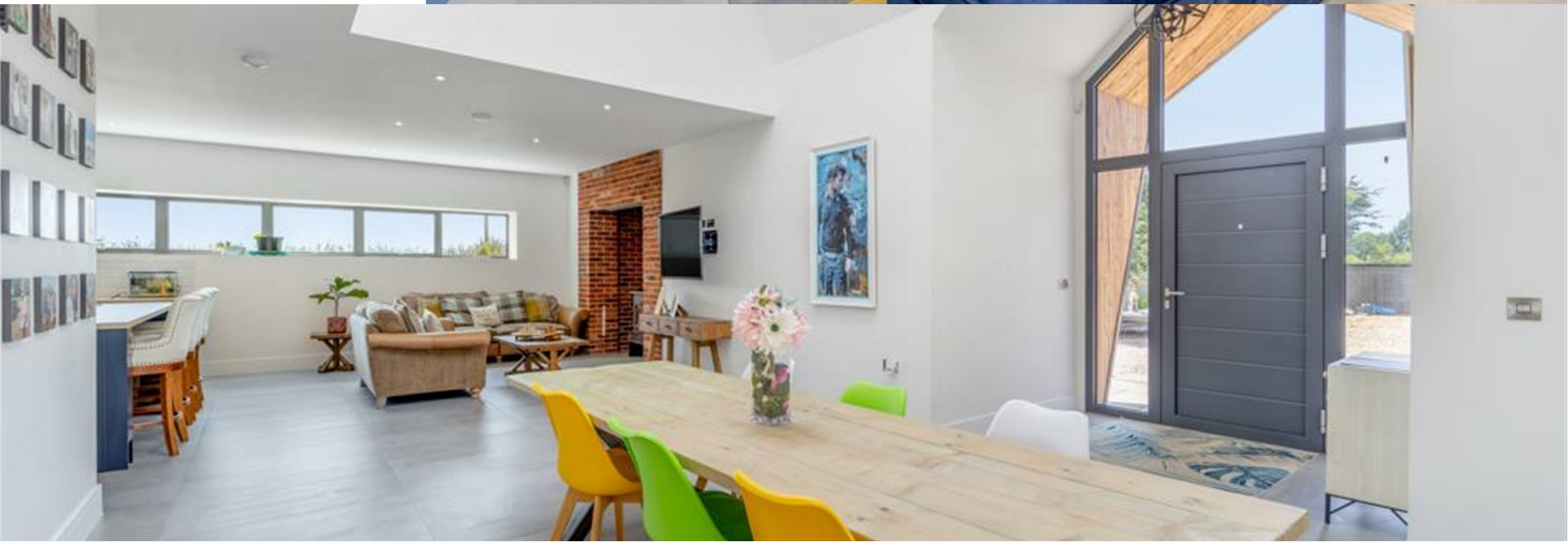
4'3" x 6'0" (1.30m x 1.83m)

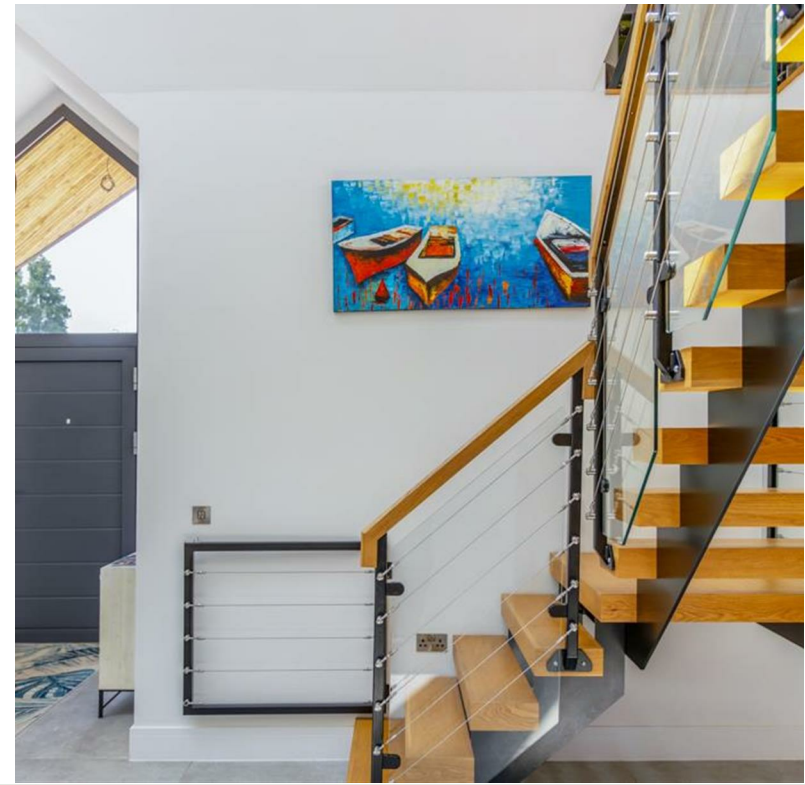
Plant Room:

7'2" x 9'3" (2.19m x 2.82m)

Study:

7'3" x 9'3" (2.22m x 2.82m)





First Floor

On the first floor, the galleried landing provides access to five bedrooms and a fully equipped family bathroom. Each bedroom is carpeted and equipped with radiators with air conditioning units in the main and second bedroom, while the bathrooms feature electric towel rails.

The principal bedroom, with its separate dressing room, boasts a high ceiling that reaches the apex of the roof. The glazed gable end offers expansive views of the fenland landscape. This room is elegantly divided by a half-height headboard wall, creating a contemporary en-suite that includes a double-ended freestanding bath, a walk-in double shower with marble-tiled walls and a panel shower screen, a toilet, and his-and-her sinks set into a modern vanity unit with inset lighting and an electric towel rail.

Bedrooms two and three both have inbuilt wardrobes and share a Jack and Jill en-suite, which includes a toilet, a hand basin inset in a vanity unit, a fully tiled walk-in shower unit, and an electric heated towel radiator.

At the end of the hallway are two further bedrooms, both featuring full-height windows. The family bathroom includes a three-piece suite comprising a toilet, a hand basin inset in a vanity unit, a freestanding bath, and a walk-in double shower with a rainwater shower head and decorative tiled walls. It also features an electric heated towel rail, porcelain floor tiles, and an extractor fan.

First Floor Measurements

Bedroom One:

18'2" x 21'1" (5.54m x 6.45m)

Master Ensuite

18'2" x 6'7" (5.54 m x 2.01m)

Dressing Room: (3.19m x 2.01m)

10'5" x 6'7"

Bedroom Two:

21'1" x 18'0" (6.44m x 5.51m)

En-suite:

9'2" x 7'8" (2.79m x 2.34m)

Bedroom Three:

13'8" x 13'6" (4.19m x 4.13m)

Bedroom Four:

10'2" x 18'4" (3.10m x 5.59m)

Bedroom Five:

9'9" x 18'4" (2.99m x 5.59m)

Family Bathroom:

17'1" x 6'7" (5.22m x 2.01m)







Grand Designs

This project was featured on the popular TV show Grand Designs (season 21, episode 3) Where the vendors shared their Self Build Journey.

Exterior

This unique residence is set on approximately 1.2 acres. The property is accessed through a five-bar gate that opens to a gravel driveway, providing ample parking. The double garage and workshop, located at the rear of the annexe, features an EV charging point.

The garden boasts a spacious Indian sandstone terrace with inset lighting along the rear of the property, and the distinct chimney provide an integrated firepit. The heated swimming pool, heated by an air source, includes a concertina cover and a pump house. Additionally, there is a children's play area and a separate vegetable plot with raised beds, enhancing the outdoor amenities.

In the rear corner of the plot, you'll find an area dedicated to UV solar panels.

Additional Information

The Property Benefits from;

CCTV Alarm

Intercom System

CAT5 Cabling to all rooms

Part of the Renewable Heat Incentive (RHI) is a scheme formed by the UK Government which has 3 years remaining.

Battery storage

Electric car charger

Solar panels

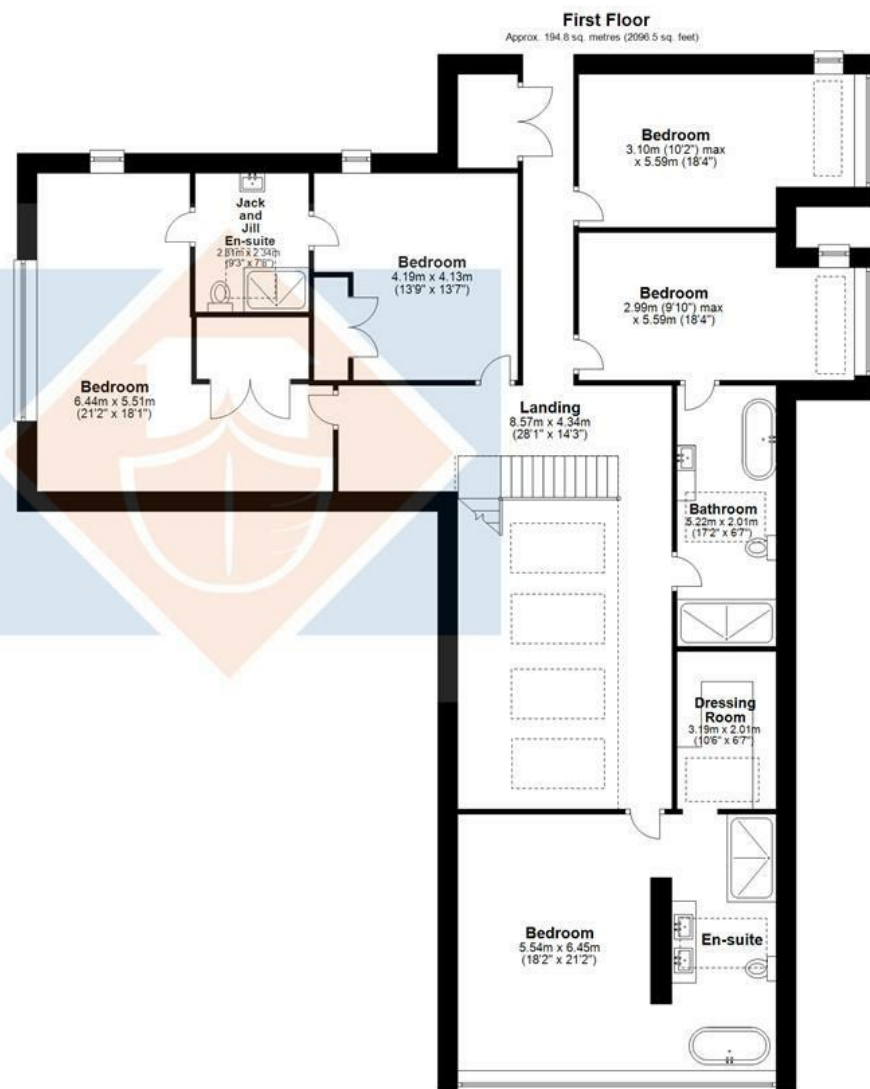
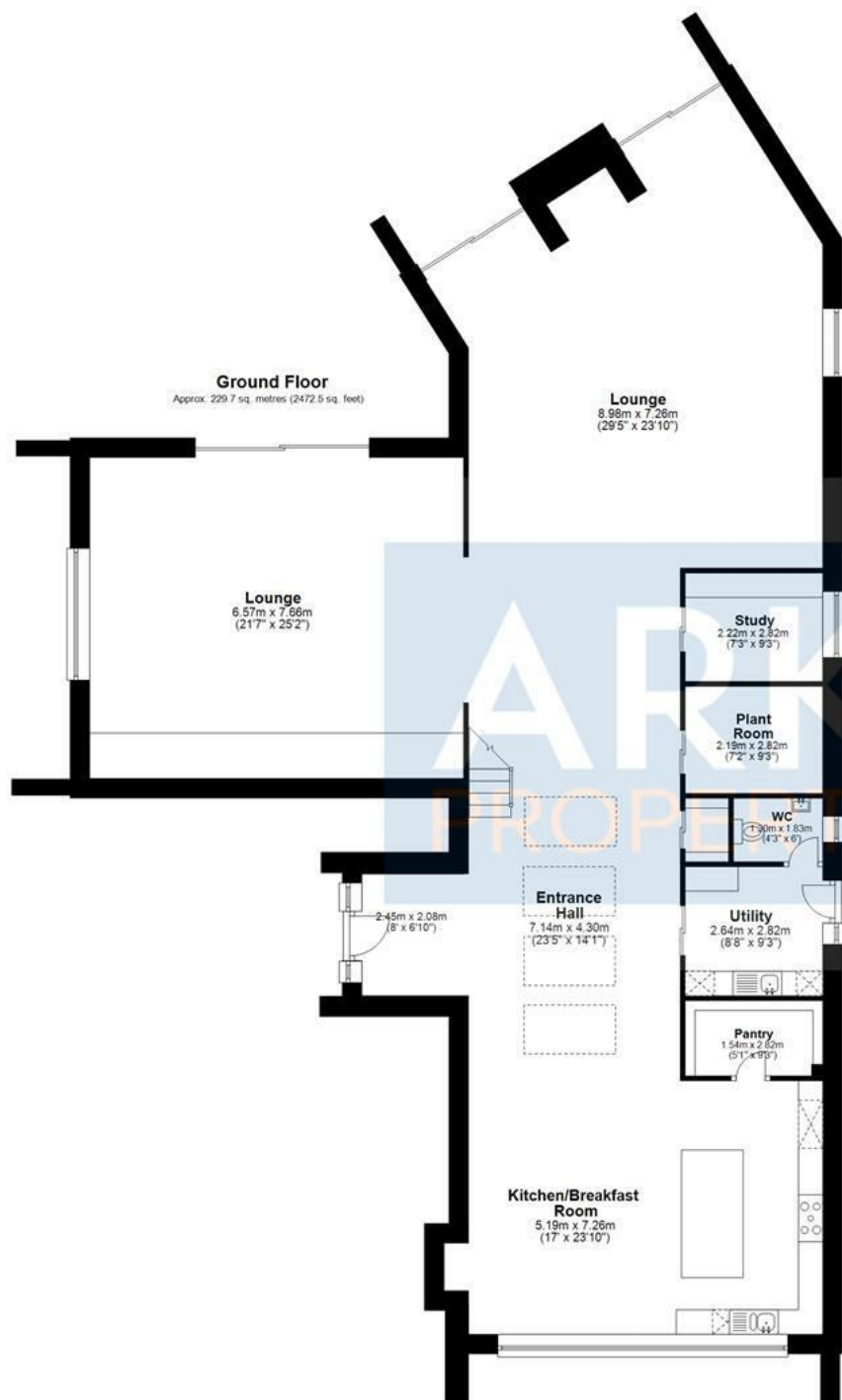
Air conditioning units

Ground source heating

Heat recovery

Swimming pool heated by air source





Total area: approx. 424.5 sq. metres (4569.0 sq. feet)

The Annexe

This two-bedroom annexe offers an impressive 2030 sq ft of additional accommodation. Upon entering the property, the hall leads you to a modern and well-equipped kitchen. The kitchen boasts sleek countertops, ample storage space, and state-of-the-art appliances. Adjacent to the kitchen, the utility room provides extra storage and laundry facilities, enhancing convenience and practicality. The downstairs shower room, featuring a walk-in shower, washbasin, and toilet, ensures easy access for both guests and residents.

Upstairs, you will find two spacious bedrooms. The master bedroom, with its bi-fold windows and Juliet balcony, is bathed in natural light and offers built-in wardrobes for plenty of practical storage space. The first floor also features a Jack and Jill shower room to both bedrooms and is equipped with modern fixtures, a walk-in shower, washbasin, and toilet. The Annex is heated with a master heating system from main house.

Behind the annexe living accommodation is a large double garage and workshop with ample parking for numerous vehicles to the front. To the rear of the garage is a woodstore. This annexe combines functionality with a contemporary design, making it an ideal home for extended families or generational living.

Verified Material Information

Tenure: Freehold

Council tax band: Annual charge:

Property construction:

Electricity supply:

Solar Panels: Yes

Other electricity sources: Ground source

Water supply: Mains

Sewerage: Mains

Heating: Under floor heating and radiators

Broadband: As stated by Ofcom, Internet

ADSL Under 24 Mbps 100% Superfast 24-100 Mbps 7.1%

Ultrafast 100-999 Mbps 7.1% Gigabit 1000 Mbps 7.1%

Mobile coverage: As stated by Ofcom, EE V: Limited D: Limited, Three V:

None D: None

O2 V: Limited D: None Vodafone V: Limited D: Limited

Parking: Driveway and Double Garage

Building safety issues: None

Restrictions: None

Public right of way: None

Flood risk: Low

Coastal erosion risk:

Planning permission: None

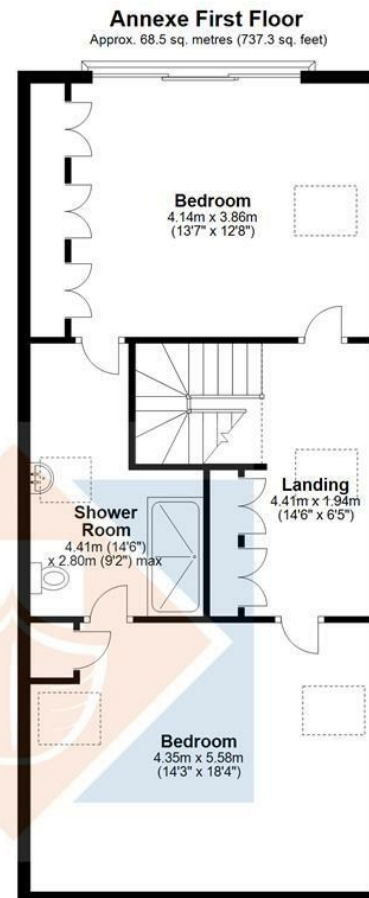
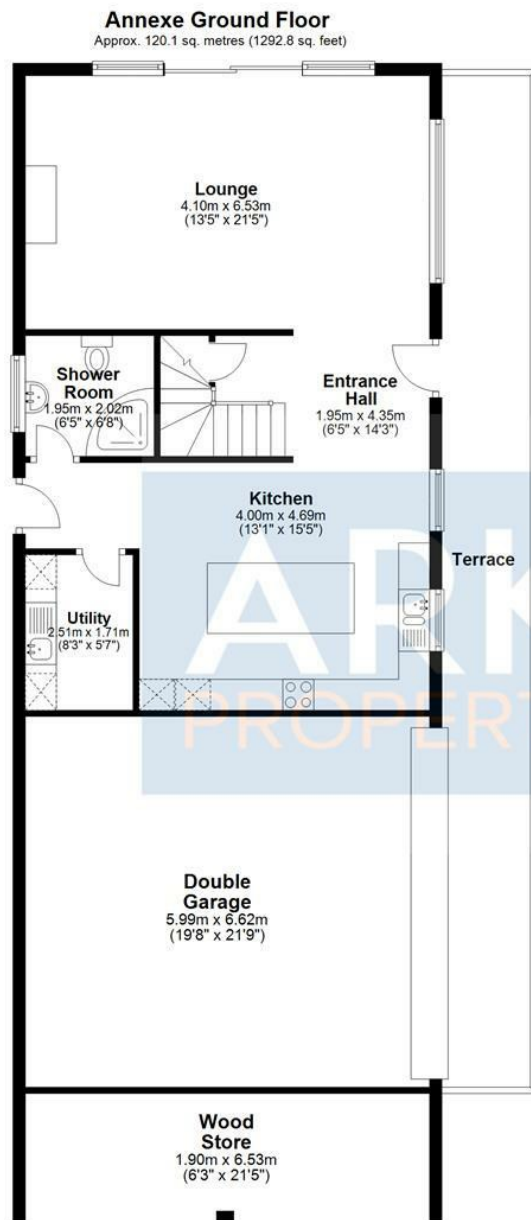
Accessibility and adaptations: N/A

Coalfield or mining area: N/A

Energy Performance rating: A







Total area: approx. 188.6 sq. metres (2030.2 sq. feet)

Location

Nestled in a semi-rural position just 3 miles west of the market town of Spalding, Weston Hills offers an ideal blend of countryside tranquility and convenient access to local amenities. Located in the South Holland District of Lincolnshire, this charming village is home to the Weston Hills C of E Primary School, while nearby Spalding offers excellent educational options, including an independent primary school and kindergarten, two single-sex grammar schools, and comprehensive schools in both Spalding and Holbeach.

Spalding itself is a delightful town set around the picturesque River Welland, featuring a range of shops, restaurants, and the local sports centre. The South Holland Civic Centre includes a cinema and theatre, and visitors can enjoy a unique water taxi ride to the popular Springfields Shopping Outlet. Renowned for its extensive farmland and breathtaking sunsets, the South Lincolnshire Fens offer a beautiful backdrop to life in this region.

Throughout the year, Spalding hosts a variety of festivals and village events, including the famous Spalding Flower Parade, celebrating the area's rich horticultural heritage. For those needing to commute or explore further afield, the nearby Spalding railway station offers regular train services. From Spalding, direct routes to London Kings Cross take approximately 1 hour, making the capital easily accessible for work or leisure. Additionally, the proximity to major road networks ensures smooth travel to nearby towns and cities, including Lincoln and Cambridge. For those seeking further amenities, the historic Georgian town of Stamford is just 21 miles away, known for its charming streets, excellent shopping, and the renowned George Hotel. The area offers a comprehensive range of educational facilities, both private and state, catering to all needs.

This location strikes the perfect balance between peaceful countryside living and easy connectivity, making it an ideal choice for those who appreciate both tranquility and convenience. Whether commuting to work, enjoying a day out in the city, or exploring the beautiful Lincolnshire countryside, Weston Hills is a perfect location for those looking for a peaceful yet well-connected lifestyle in the heart of Lincolnshire.

Disclaimer

Please note the vendor of this property is associated with Ark Property Centre

These particulars, whilst believed to be accurate are set out as general outline only for guidance and do not constitute any part of an offer or contract. Intending purchasers should not rely on them as statements of representation of fact, but must satisfy themselves by inspection or otherwise as to their accuracy. No person in this firm's employment has authority to make or give representation or warranty in respect of the property. These details are subject to change.

