



Woodcock
&son

4 Bedrooms

House - Townhouse

Located in Ipswich

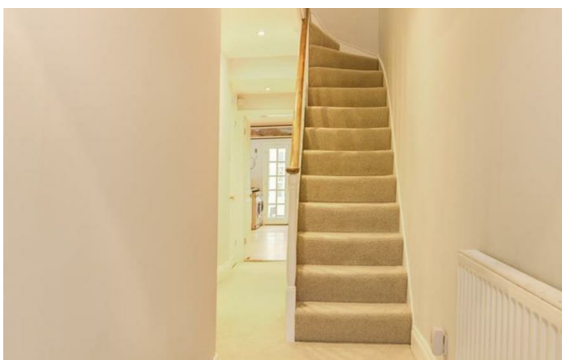
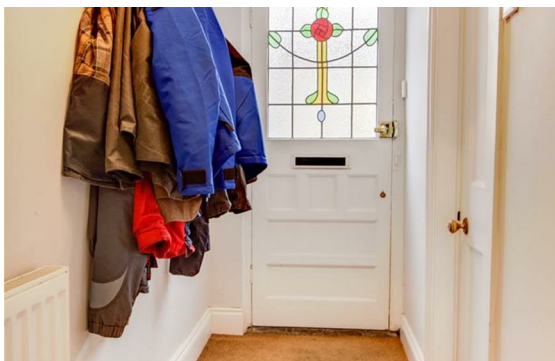
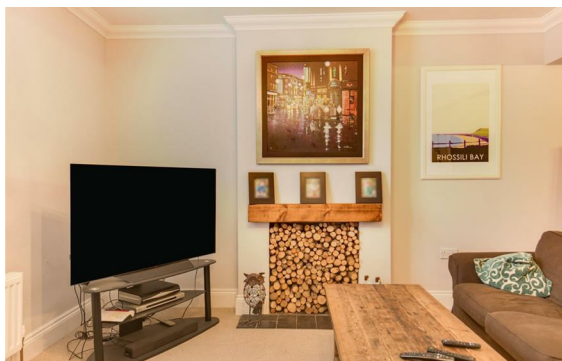
£410,000



enquiries@woodcockandson.co.

www.woodcockandson.uk

01473 233355



A most elegant & fully modernised Victorian Town House, Grade II Listed, located within a short walk of the town centre. Arranged over 2 floors, plus a cellar, it includes double reception room, fitted kitchen/diner, conservatory, 4 bedrooms, 2 bathrooms. Parking for 3 cars, charming secluded gardens.

Energy Efficiency Rating:

Agents Note: Whilst every care has been taken to prepare these particulars, they are for guidance purposes only. All measurements are approximate and are for general guidance purposes only and whilst every care has been taken to ensure their accuracy, they should not be relied upon and potential buyers/tenants are advised to recheck the measurements.

16 Arcade Street
Ipswich
Suffolk
IP1 1EP

01473 233355

enquiries@woodcockandson.co.uk

www.woodcockandson.uk