



Woodcock
& son

4 Bedrooms

House - Detached

Located in Ipswich

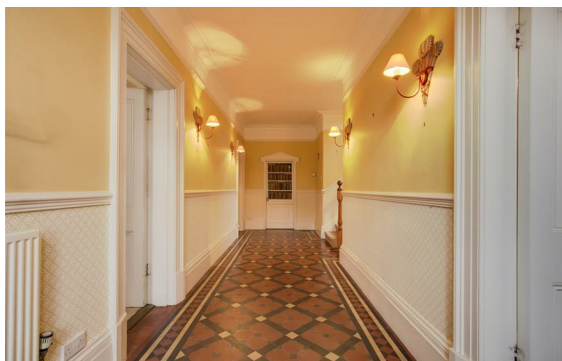
£550,000



enquiries@woodcockandson.co

www.woodcockandson.uk

01473 233355



16 Arcade Street
Ipswich
Suffolk
IP1 1EP

01473 233355

enquiries@woodcockandson.co.uk

Boasting a prominent position on Rosehill Road in East Ipswich, this splendid Victorian detached house offers an exceptional opportunity to improve an already impressive residence. With a vast layout, the property offers three spacious reception rooms and four double bedrooms, providing ample space for both relaxation and entertaining. This is a rare opportunity to acquire an impressive residence recognised by Ipswich Borough Council for its architectural design and size of plot.

Energy Efficiency Rating: E

Agents Note: Whilst every care has been taken to prepare these particulars, they are for guidance purposes only. All measurements are approximate and are for general guidance purposes only and whilst every care has been taken to ensure their accuracy, they should not be relied upon and potential buyers/tenants are advised to recheck the measurements.

www.woodcockandson.uk