



Woodcock
&son

3 Bedrooms

House - Link
Detached

Located in Ipswich

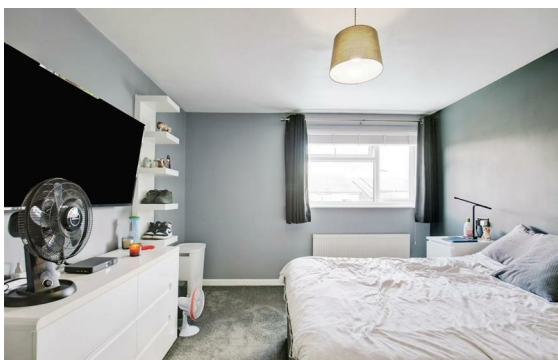
£275,000



enquiries@woodcockandson.co.

www.woodcockandson.uk

01473 233355



16 Arcade Street
Ipswich
Suffolk
IP1 1EP

01473 233355

enquiries@woodcockandson.co.uk

In favourite Stoke Park area, a stylish and immaculately presented link detached family house with 3 bedrooms, sitting room and conservatory style sun room, family bathroom. Off road parking.

Energy Efficiency Rating: D

Agents Note: Whilst every care has been taken to prepare these particulars, they are for guidance purposes only. All measurements are approximate and are for general guidance purposes only and whilst every care has been taken to ensure their accuracy, they should not be relied upon and potential buyers/tenants are advised to recheck the measurements.

www.woodcockandson.uk