



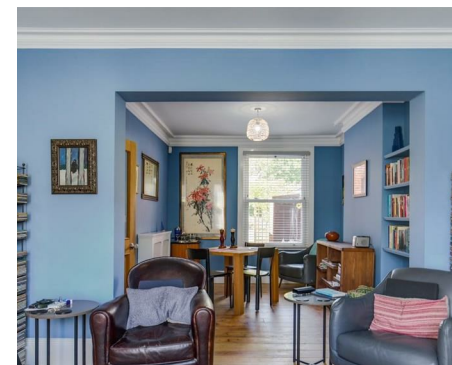
Woodcock  
&son

4 Bedrooms

House - Terraced

Located in Ipswich

**£425,000**



enquiries@woodcockandson.co.

[www.woodcockandson.uk](http://www.woodcockandson.uk)

01473 233355



16 Arcade Street  
Ipswich  
Suffolk  
IP1 1EP

01473 233355

[enquiries@woodcockandson.co.uk](mailto:enquiries@woodcockandson.co.uk)

Immaculately presented 4 bedroom Victorian Town House of outstanding character and appeal, arranged over 3 floors, modernised to a sensitive standard, backing onto Christchurch Park and a short walk town centre

### **Energy Efficiency Rating: D**

Agents Note: Whilst every care has been taken to prepare these particulars, they are for guidance purposes only. All measurements are approximate and are for general guidance purposes only and whilst every care has been taken to ensure their accuracy, they should not be relied upon and potential buyers/tenants are advised to recheck the measurements.

[www.woodcockandson.uk](http://www.woodcockandson.uk)