



3 Bedrooms

Apartment

Located in Ipswich

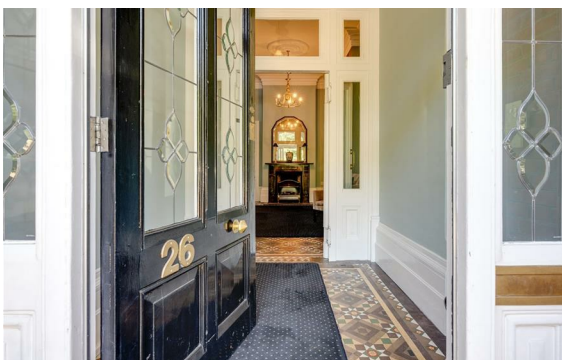
£525,000



enquiries@woodcockandson.co

www.woodcockandson.uk

01473 233355



Exceptional first floor apartment contained within fine Victorian building overlooking Christchurch Park. Elegant & spacious rooms with many preserved features of the era, including reception hall, 2 reception rooms, luxurious fitted kitchen/breakfast room, 3 bedrooms, 2 bathrooms. Parking & gardens

Energy Efficiency Rating: D

Agents Note: Whilst every care has been taken to prepare these particulars, they are for guidance purposes only. All measurements are approximate and are for general guidance purposes only and whilst every care has been taken to ensure their accuracy, they should not be relied upon and potential buyers/tenants are advised to recheck the measurements.



16 Arcade Street

Ipswich

Suffolk

IP1 1EP

01473 233355

enquiries@woodcockandson.co.uk

www.woodcockandson.uk