



**Woodcock
& Son**

4 Bedrooms

House - Detached

Located in Ipswich

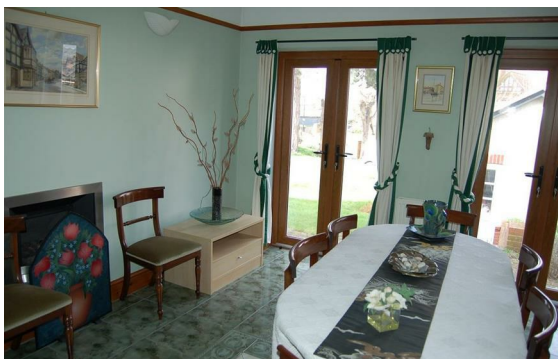
£700,000



enquiries@woodcockandson.co

www.woodcockandson.uk

01473 233355



Distinctive detached 1920s family house of much character, in sought after location close Town Centre & Christchurch Park, in excellent modernised order with 3 reception rooms, farmhouse style fitted kitchen, cloaks/utility, 4 bedrooms, 2 bathrooms. Parking for 4, garage. 1/4 acre gardens

Energy Efficiency Rating: D

Agents Note: Whilst every care has been taken to prepare these particulars, they are for guidance purposes only. All measurements are approximate and are for general guidance purposes only and whilst every care has been taken to ensure their accuracy, they should not be relied upon and potential buyers/tenants are advised to recheck the measurements.



Woodcock & Son

16 Arcade Street

Ipswich

Suffolk

IP1 1EP

01473 233355

enquiries@woodcockandson.co.uk

www.woodcockandson.uk