



Oxendon Wood Avens Way, Desborough **Freehold** £330,000

**Pattison
Lane**

Key Features



- The Oxendon Design
- Three Storey Accommodation
- Living Room/Dining Room
- Downstairs Cloakroom
- Master Suite Second Floor

Welcome to Wood Avens Way at Weavers Fields, an exclusive collection of premium residences presented by Pattison Lane Estate Agents in Desborough. Meticulously constructed by Bellway Homes to an award-winning standard, The Oxendon is finished to the highest specification, featuring open-plan living space downstairs and four bedrooms spread across two additional storeys. Three of the bedrooms are double in size, two with en suites, while the master bedroom also boasts the advantage of a private floor and a dedicated dressing area.

Internal images are for illustration purposes and are not plot specific.



Entrance Hall

Cloakroom:

1.45m x 2.50m (4'9" x 8'2")

Kitchen:

2.99m x 3.33m (9'10" x 10'15")

Living and dining room:

4.17m x 5.00m (13'8" x 16'5")

First Floor

Bedroom 2:

3.46m x 3.84m (11'4" x 12'7")

Bedroom 2 en suite:

1.45m x 1.90m (4'9" x 6'3")

Bedroom 3:

2.75m x 3.20m (9'2" x 10'5")

Bedroom 4/Study:

2.24m x 2.16m (7'3" x 7'1")

Bathroom:

2.73m x 1.91m (8'11" x 6'3")

Second Floor

Bedroom 1:

4.18m x 5.05m (13'7" x 16'5")

Bedroom 1 en suite:

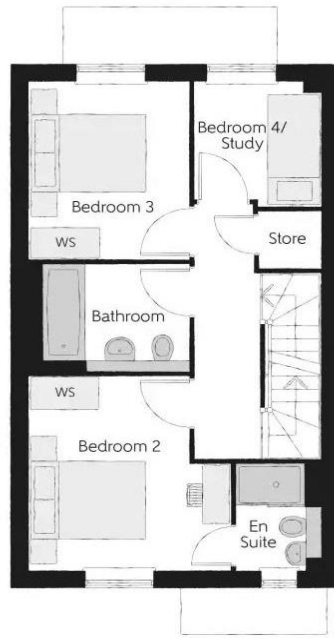
2.28m x 2.30m (7'6" x 7'7")



GROUND FLOOR



FIRST FLOOR



SECOND FLOOR



ILLUSTRATION PURPOSES ONLY

Dressing:
2.61m x 4.35m (8'7" x 14'2")

Outside

Parking for Two Cars

Agents Note

Furniture arrangements are for illustrative purposes only. Items are not included, nor to scale. The Council Tax band is an estimate and may change.

The items shown in this key may be subject to change, and positions could vary from those indicated on this floorplan. External finishes, landscaping and configuration may vary from plot to plot.


All dimensions are approximate and should not be used for carpet sizes, appliance spaces or furniture. We operate a policy of continuous improvement and individual features such as kitchen and bathroom layouts, doors, windows, garages and elevational treatments may vary from time to time. Consequently these particulars should be treated as general guidance only and do not constitute a contract, part of a contract or a warranty.

To view this property call Pattison Lane on:
01536 430527

Selling your property?

Contact us to arrange a **FREE** home valuation.

 01536 430527

 42 Station Road, Desborough, KETTERING, Northamptonshire, NN14 2RL

 desborough@pattisonlane.co.uk

 www.pattisonlane.co.uk



 SCAN ME



 SCAN ME



Sharman Quinney Holdings Limited is registered in England and Wales under company number 4174227, Registered Office is Cumbria House, 16-20 Hockliffe Street, Leighton Buzzard, Bedfordshire, LU7 1GN. VAT Registration Number is 500 2481 05.

1: These particulars do not constitute part or all of an offer or contract. 2: The measurements indicated are supplied for guidance only and as such must be considered incorrect. 3: Potential buyers are advised to recheck the measurements before committing to any expense. 4: Sharman Quinney has not tested any apparatus, equipment, fixtures, fittings or services and it is the buyers interests to check the working condition of any appliances. 5: Sharman Quinney has not sought to verify the legal title of the property and buyers must obtain verification from their legal representative. 6: Intending purchasers will be asked to produce identification documentation at a later stage and we would ask your co-operation in order that there will be no delay in agreeing the sale. Ref: DPL101536 - 0001

