



Braybrooke Road, Desborough **Freehold** £200,000 Offers Over

**Pattison
Lane**

Key Features

🛏️ 2 🚿 1 💡 D 🏠 A

- Two Bedroom Home
- Large Front & Rear Gardens
- Modern Fitted Kitchen
- Modern Fitted Bathroom Suite
- Log Burning Stove

This two-bedroom home is presented in fantastic order with highlights to include; a stunning refitted kitchen with "silver forest" granite work surfaces and splash backs, a cosy lounge with a multi fuel stove, a refitted bathroom and large gardens to both the front and rear. Viewing advised.



ENTRANCE HALL

Reached via main front door. Window to side aspect. Stairs rising to first floor landing. Under stairs storage cupboard.

LOUNGE 11'11 x 11'8 (3.63m x 3.55m)

Window to front aspect. Log burning stove.

KITCHEN / DINING ROOM 18'9 x 9'4 max (5.71m x 2.84m)

Fitted with a range of glossed units to base and wall with silver forest granite work surfaces over and splashback surrounds. Sink and drainer unit with mixer tap over. Integrated appliances to include an oven, inset hob and dishwasher. Space and plumbing for washing machine. Storage cupboard. Windows to rear aspect. Door to side aspect.

FIRST FLOOR LANDING

Window to side aspect. Doors to bedrooms and bathroom.

BEDROOM ONE 9'10 x 11'8 (2.99m x 3.55m)

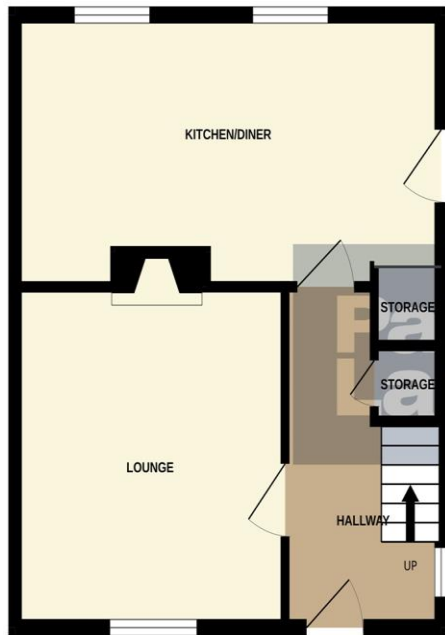
Window to front aspect. Door to dressing room / nursery. Storage cupboard.

DRESSING ROOM / NURSERY LEADING FROM BEDROOM ONE 5'4 x 11'8 (1.62m x 3.55m)

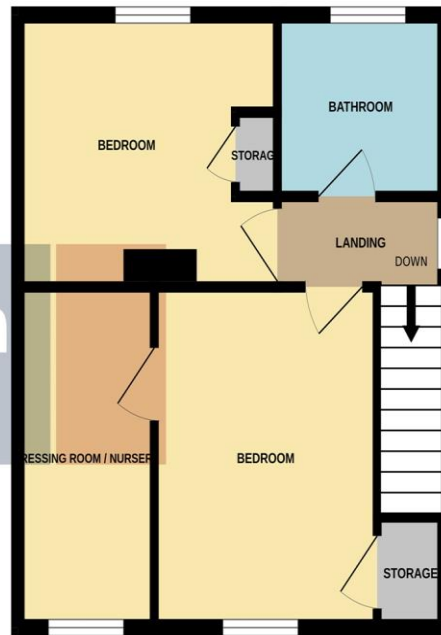
Window to front aspect.



GROUND FLOOR



1ST FLOOR



Whilst every attempt has been made to ensure the accuracy of the floorplan contained here, measurements of doors, windows, rooms and any other items are approximate and no responsibility is taken for any error, omission or mis-statement. This plan is for illustrative purposes only and should be used as such by any prospective purchaser. The services, systems and appliances shown have not been tested and no guarantee as to their operability or efficiency can be given.
Made with Metropix ©2025

BEDROOM TWO 11'5 max x 11'5 max (3.55m x 3.47m)

Window to front aspect. Storage cupboard.

BATHROOM

Modern fitted suite comprising a P shaped bath with shower screen and shower over, vanity wash hand basin and WC. Window to rear aspect.

OUTSIDE

FRONT GARDEN

Large frontage with laid to lawn, and pathway leading to the main front door and side gate access.

REAR GADREN

Enclosed garden with a paved patio / seating area, laid to lawn and timber shed.

To view this property call Pattison Lane on:
01536 430527

Selling your property?

Contact us to arrange a **FREE** home valuation.

 01536 430527

 42 Station Road, Desborough, KETTERING, Northamptonshire, NN14 2RL

 desborough@pattisonlane.co.uk

 www.pattisonlane.co.uk



 SCAN ME



 SCAN ME



Sharman Quinney Holdings Limited is registered in England and Wales under company number 4174227, Registered Office is Cumbria House, 16-20 Hockliffe Street, Leighton Buzzard, Bedfordshire, LU7 1GN. VAT Registration Number is 500 2481 05.

1: These particulars do not constitute part or all of an offer or contract. 2: The measurements indicated are supplied for guidance only and as such must be considered incorrect. 3: Potential buyers are advised to recheck the measurements before committing to any expense. 4: Sharman Quinney has not tested any apparatus, equipment, fixtures, fittings or services and it is the buyers interests to check the working condition of any appliances. 5: Sharman Quinney has not sought to verify the legal title of the property and buyers must obtain verification from their legal representative. 6: Intending purchasers will be asked to produce identification documentation at a later stage and we would ask your co-operation in order that there will be no delay in agreeing the sale. Ref: DPL101264 - 0004

