

NORTHCOTE STREET, NORTHAMPTON, NN2

£179,995 | 2 Bed House - Mid Terrace

BELVOIR!



Two bedroom mid terraced house located within walking distance to the Town Centre and Train Station. Comprises of entrance hall, living/dining room and kitchen to the ground floor. Upstairs there are two bedrooms and a bathroom. To the rear of the property is a small gravelled garden with patio.

- Two Bedrooms
- Rear Garden
- No Chain

COUNCIL TAX BAND: A

Entrance Hall

Lounge/Diner 22'3 x 10'1 (6.78m x 3.07m)

Kitchen 9'9 x 6'5 (2.97m x 1.96m)

Bedroom One 13'2 x 10'5 (4.01m x 3.18m)

Bedroom Two 11'5 x 8' (3.48m x 2.44m)

Bathroom 9'9 x 6'4 (2.97m x 1.93m)

Rear Garden

DRAFT DETAILS

At the time of print, these particulars are awaiting approval from the vendor(s).

Disclaimer

We endeavour to make our sales particulars accurate and reliable, however, they do not constitute or form part of an offer or any contract and none is to be relied upon as statements of representation or fact. Any services, systems and appliances listed in this specification have not been tested by us and no guarantee as to their operating ability or efficiency is given. All measurements have been taken as a guide to prospective buyers only, and are not precise. If you require clarification or further information on any points, please contact us, especially if you are travelling some distance to view. Fixtures and fittings other than those mentioned are to be agreed with the seller by separate negotiation.

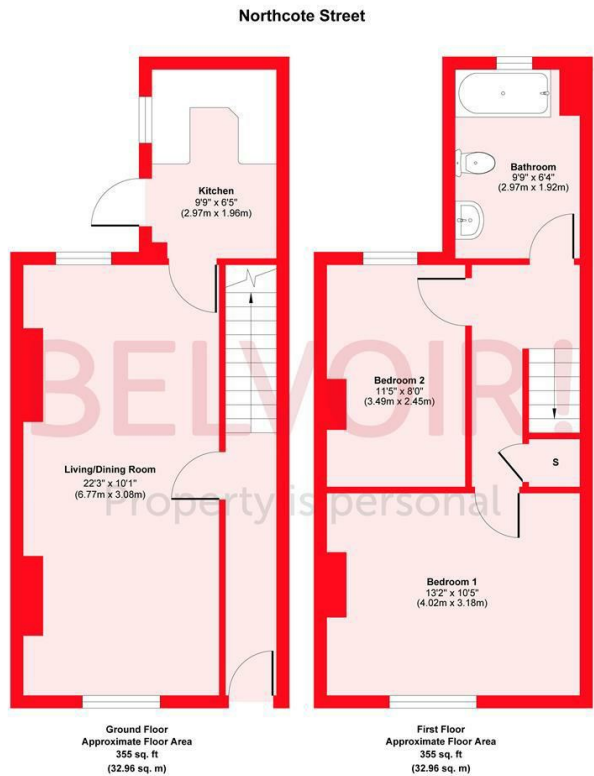
NORTHCOTE STREET, NORTHAMPTON, NN2

£179,995 | 2 Bed House - Mid Terrace

BELVOIR!

Energy Efficiency Rating

	Current	Potential
Very energy efficient - lower running costs		
(92 plus) A		90
(81-91) B		
(69-80) C	72	
(55-68) D		
(39-54) E		
(21-38) F		
(1-20) G		
Not energy efficient - higher running costs		
England & Wales	EU Directive 2002/91/EC	



Approx. Gross Internal Floor Area 710 sq. ft / 65.92 sq. m
Illustration for identification purposes only, measurements are approximate, not to scale.
Produced by Elements Property

