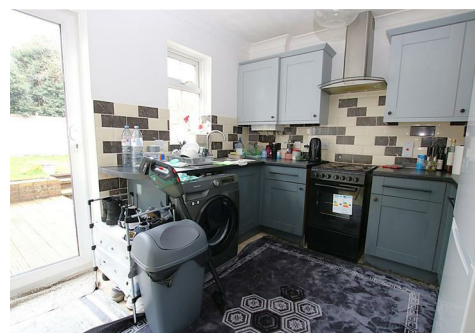


GREEVES CLOSE, NORTHAMPTON, NN5

£240,000 | 2 Bed House - Semi-Detached

BELVOIR!



Belvoir Estate Agents are delighted to offer for sale this modern two bedroom semi detached house situated in a small cul-de-sac on St Giles Park in Duston. The accommodation briefly comprises entrance porch, lounge, kitchen/diner, first floor landing, two bedrooms and a bathroom. The property further benefits from gas radiator central heating, upvc double glazing, large driveway providing off road parking for several cars and a well proportioned rear garden.

- Semi Detached
- Two Bedrooms
- Kitchen/Diner
- Large Driveway
- Cul De Sac Location
- Private Rear Garden
- Gas Radiator Heating
- UPVC Double Glazing

COUNCIL TAX BAND: B

Disclaimer.

We endeavour to make our sales particulars accurate and reliable, however, they do not constitute or form part of an offer or any contract and none is to be relied upon as statements of representation or fact. Any services, systems and appliances listed in this specification have not been tested by us and no guarantee as to their operating ability or efficiency is given. All measurements have been taken as a guide to prospective buyers only, and are not precise. If you require clarification or further information on any points, please contact us, especially if you are travelling some distance to view. Fixtures and fittings other than those mentioned are to be agreed with the seller by separate negotiation.

Draft Details.

At the time of print, these particulars are awaiting approval from the vendor(s).

GREEVES CLOSE, NORTHAMPTON, NN5

£240,000 | 2 Bed House - Semi-Detached

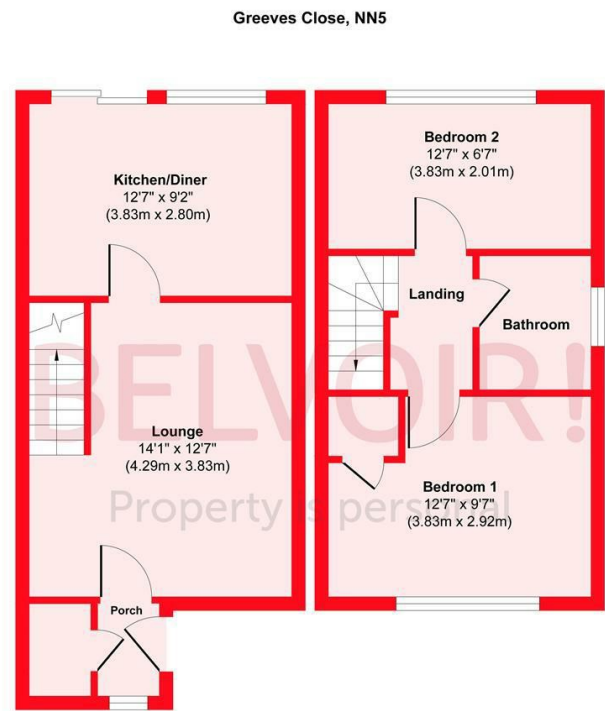
BELVOIR!

Energy Efficiency Rating

	Current	Potential
Very energy efficient - lower running costs		
(92 plus) A		
(81-91) B		
(69-80) C		
(55-68) D		
(39-54) E		
(21-38) F		
(1-20) G		
Not energy efficient - higher running costs		
	68	86

England & Wales

EU Directive 2002/91/EC



Approx. Gross Internal Floor Area 621 sq. ft / 57.81 sq. m
Illustration for identification purposes only, measurements are approximate, not to scale.
Produced by Elements Property

