



35 Wildern Lane, East Hunsbury, Northampton, NN4 0SN
£455,000

BELVOIR!

BELVOIR!

BELVOIR! is delighted to offer to the market this highly impressive and immaculately presented four bedroom detached family home in the always popular Wildern Lane residential area of East Hunsbury.

The property is ideally situated on a large plot and benefits from easy access to well regarded primary and secondary schooling as well as excellent local parks, motorway links, restaurants and shops. In brief the sizeable ground floor accommodation comprises; entrance hall, downstairs cloakroom, contemporary open plan kitchen/dining room with separate utility, large living room and an office that could also be used as a playroom/additional bedroom. To the first floor are four well proportioned bedrooms (master with en-suite) and the family bathroom. Outside the rear garden enjoys a high level of privacy and has been carefully landscaped providing both lawn and decking areas for entertaining friends and family. Further benefits include ample off road parking, double glazing and a storage area.

This is an ideal family home and well worth viewing.

DRAFT DETAILS

At the time of print, these particulars are awaiting approval from the vendor(s).

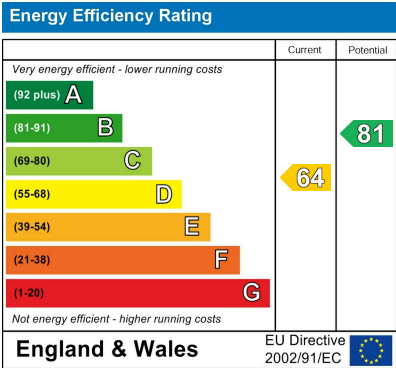
GENERAL DISCLAIMER

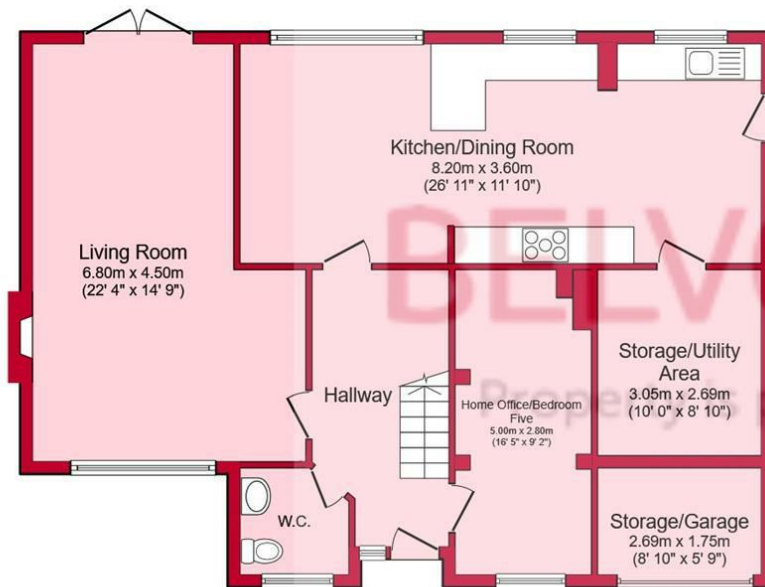
We endeavour to make our sales particulars accurate and reliable - however they do not constitute or form part of an offer or any contract and are not to be relied upon as statements of representation or fact. Any services, systems and appliances listed, have not been tested by us and no guarantee is given regarding their condition or operating ability. Any measurements are offered as a guide only, and should not be considered precise. What is, or is not included in the sale will be confirmed by the vendor to solicitors on a fixtures and fittings form.

BUYING TO LET?

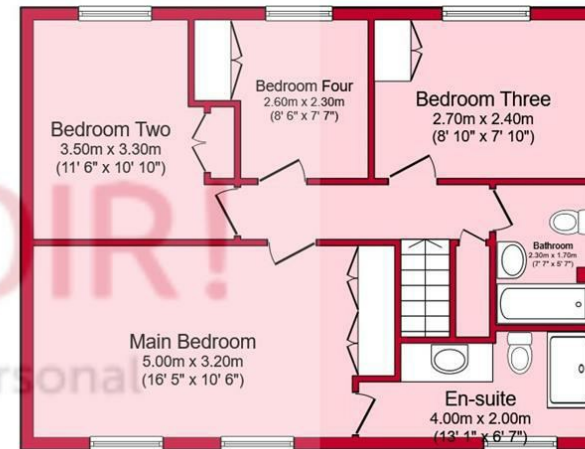
Belvoir has offered a lettings service in Northampton for nearly 20 years and currently manages hundreds of properties throughout the town. We know the market inside out - which properties will let, how much they'll let for, and what sort of tenant they will attract.

If you're looking to invest but need some guidance, we provide free buy-to-let advice on a no-obligation basis. We also help existing landlords who want their portfolio reviewed, or are struggling with a problematic tenancy. Contact our office for more details.





Ground Floor



First Floor

Total floor area 160.4 sq.m. (1,726 sq.ft.) approx

This floor plan is for illustrative purposes only. It is not drawn to scale. Any measurements, floor areas (including any total floor area), openings and orientation are approximate. No details are guaranteed, they cannot be relied upon for any purpose and they do not form part of any agreement. No liability is taken for any error, omission or misstatement. A party must rely upon its own inspection(s). Powered by www.focalagent.com

